



FLORIDA HIECC MEETING MAY 29, 2015

HARRIS TEAM UPDATE



AGENCY FOR HEALTH CARE ADMINISTRATION

A grayscale background image of a healthcare worker, likely a nurse, wearing a blue scrub top, a white face mask, and a hairnet. She is holding a tablet computer and looking towards the camera. The image is slightly blurred and has a white overlay on the right side containing binary code (0s and 1s).

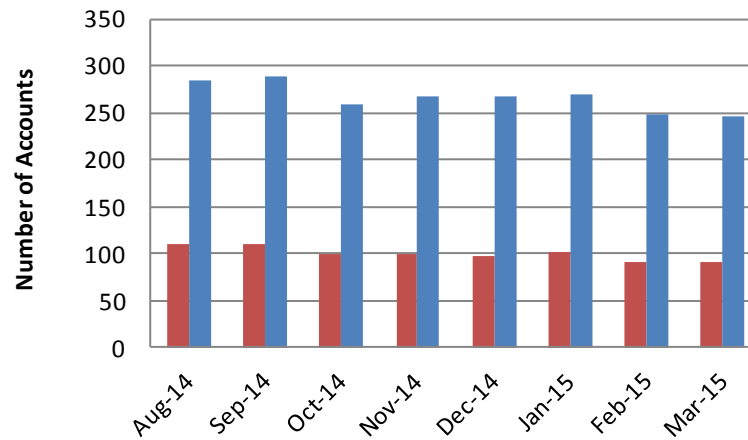
RECENT ACCOMPLISHMENTS FEBRUARY 2015 – APRIL 2015



- Event Notification Service (ENS)
 - *100% of hospital connections are in Production (206 hospital connections)*
 - *Received signed subscription agreements from Molina Healthcare of Florida and Integral Quality Care*
 - *WellCare Health Plans, Sunshine State Health Plan and Integral Quality Care started receiving notifications through ENS*
- Patient Look-Up (PLU)
 - *Tampa Bay RHIO completed milestones 12-15 of their Centers for Medicare and Medicaid Services (CMS) funded facilitated onboarding with one milestone (move to production) remaining*
- Direct Messaging Service (DMS)
 - *Metrics included in following slides*



Direct Messaging Registrants



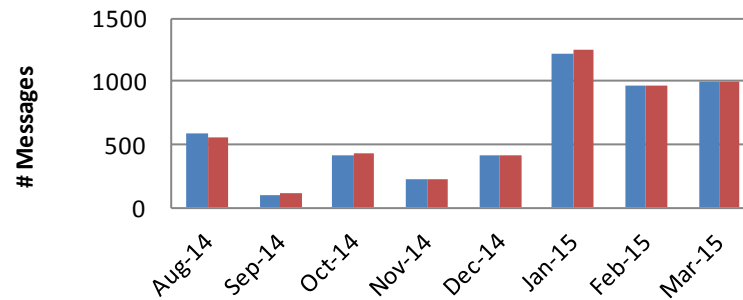
	Aug-14	Sep-14	Oct-14	Nov-14	Dec-14	Jan-15	Feb-15	Mar-15
■ Direct Messaging Accounts	109	110	100	99	98	101	91	91
■ Direct Messaging Users	284	289	258	267	268	269	248	247



DIRECT MESSAGING TRANSACTIONS



Direct Messaging Transactions



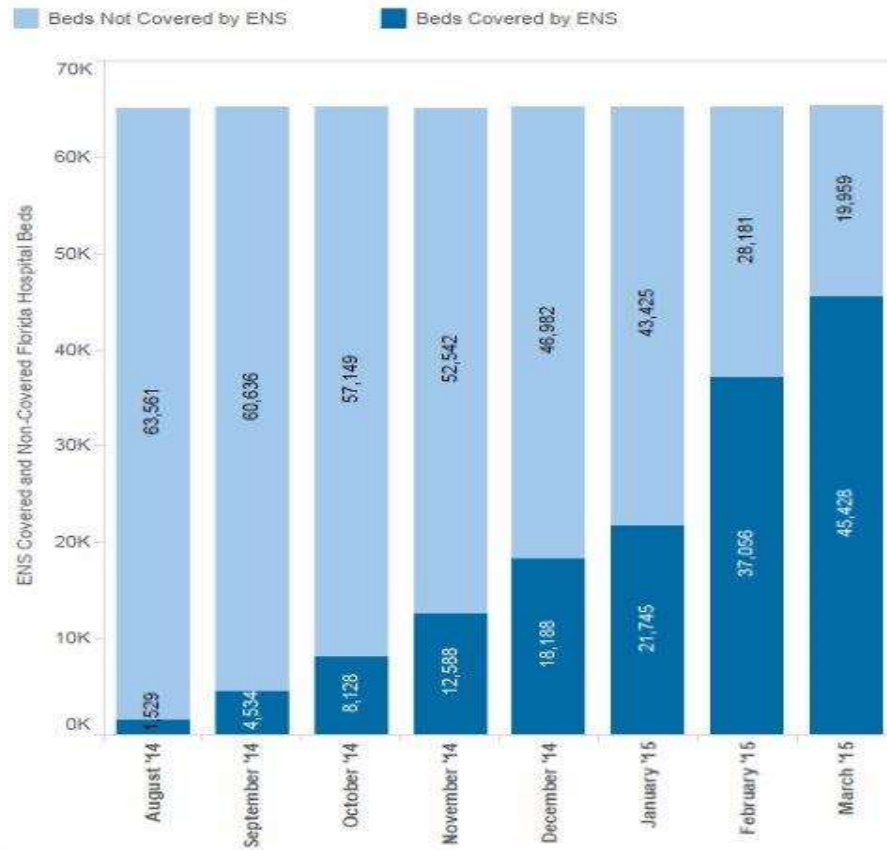
	Aug-14	Sep-14	Oct-14	Nov-14	Dec-14	Jan-15	Feb-15	Mar-15
# Messages Received by Account	593	106	416	221	412	1213	969	994
# Messages Originated by Account	564	118	433	225	417	1254	969	1003



ENS PRODUCTION DATA SOURCES



Percent and Number of ENS Covered Florida Hospital Beds								
Percent of ENS Covered Beds	2%	7%	12%	19%	28%	33%	57%	69%
Total Florida Hospital Beds	65,090	65,170	65,277	65,130	65,170	65,170	65,237	65,387



<http://www.fhin.net/kms/graphs/ensbeds.shtml>



Organization	Approximate Member #	Executed Agreement	Target Start Date	In Production
WellCare	50,000	X	Jan-15	X
Sunshine State Health Plan	400,000	X	Mar-15	X
Integral Quality Care	90,000	X	Mar-15	X
Molina	300,000	X	Jun-15	



- **Strategic Health Intelligence (SHI)**
- **Atlantic Coast HIE (ACH)**
- **Florida Hospital/Adventist**
- **UF Health**
- **Broward Health**
- **Martin Health**
- **Bethesda Health**
- **Senior Home Care – an affiliate of Kindred at Home**
- **Orlando Health**



- **Community Health Systems (CMS) formerly known as Health Management Associates (HMA) – pending “go live”**

Community Health Systems (formerly HMA) Deployment Status (Express Lite)



- **Department of Health (DOH)** –Started discussing plan to complete clinical data repository (CDR) implementation; started end-to-end Self Test; continue to look at public health use cases
- **Florida Accountable Care Services (ACO)** – no requests for support this quarter
- **Tampa Bay Regional Health Information Organization (RHIO)** – completed pre-validation and validation testing; completed onboarding milestones 12 – 15 of 16 milestones
- **Community Health IT (Relay Health)** – Assisted with Aurion configuration; completed end-to-end self test and cross-gateway test; researched options for hosting Express Lite



PLU DEPLOYMENTS IN WORK



DOH Deployment Status (Express)



Florida Accountable Care Services Deployment Status (Express Lite)

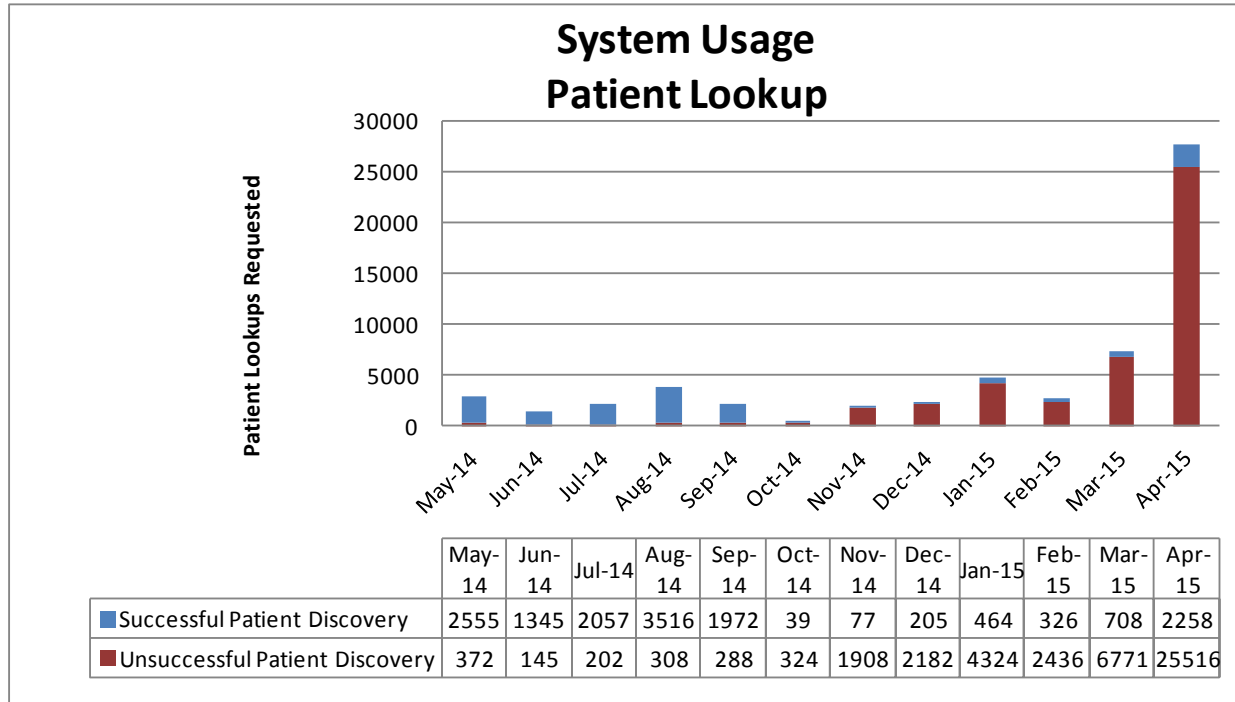


Tampa Bay RHIO Deployment Status (Site Services)



Community Health IT (Site Services)





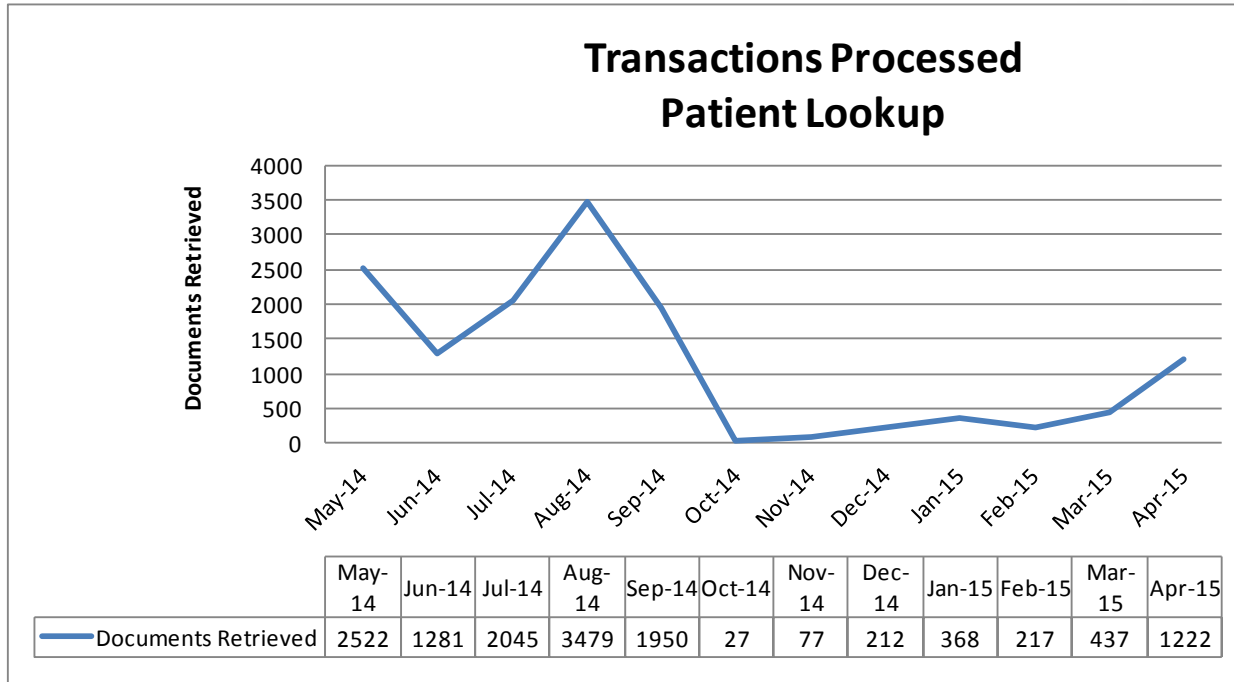
Note: Florida Hospital turned on a data availability service during which sends a broadcasted queries to all Florida HIE production nodes during patient registration.



April 2015 Node Inbound Transactions

Node	Successful	Unsuccessful	Total Inbound Patient Discovery
SHI	10	3455	3465
ACH	25	3440	3465
Florida Hospital	12	7	19
UF Health	14	3457	3471
Broward Health	21	3456	3477
Martin Health System	4	3463	3467
Bethesda Health	7	3463	3470
Senior Home Care	74	3392	3466
Orlando Health	2091	1383	3474
Totals	2258	25,516	27,774





A grayscale photograph of a healthcare worker, likely a nurse, wearing a blue scrub top, a white face mask, and a hairnet. She is holding a tablet computer and looking towards the camera. The background is blurred, showing other people in a clinical setting. The image is overlaid with a semi-transparent red banner at the bottom.

UPCOMING ACTIVITIES MAY 2015 – JULY 2015



- Data Sources
 - *Monitor performance and maintain as required*
- Health Plans

ENS Health Plan Deployment Plan		
<u>Organization</u>	<u>Initial Member #</u>	<u>Target Start Date</u>
Molina Healthcare of Florida	300,000	June 2015
TBD	100,000	June 2015
TBD	100,000	June 2015
TBD	100,000	June 2015





QUESTIONS?

