

Florida Health Information Exchange (HIE)

Quarterly Plan Report

Contract No. EXD027

November 20, 2015

(Ref. EXD027 Attach. I, Pg. 21 Reporting)



Florida HIE Quarterly Planning Report

1. Summary of Quarterly Activities

The following activities have been completed during the eighteenth quarter of execution of the Florida Health Information Exchange (Florida HIE) program. This covers the period from August 1, 2015 through October 31, 2015.

The development team continued to support the Event Notification Service (ENS) which provides health plans and accountable care organizations (ACOs) with timely notifications about their member's hospital encounters from hospital data sources. Palm Beach ACO, Accountable Care Coalition of Northwest Florida, Aledade, South Florida Community Care Network, Accountable Care Medical Group, AllCare Options, Health Choice Care, US Medical Management, Accountable Care Options, Health Choice Care, and Orange Accountable Care of South Florida signed the ENS Subscription Agreement this quarter joining WellCare, Sunshine State Health Plan, Integral Quality Care, Molina Healthcare, and Primary Partners. There were 51,925 health plan/ACO notifications through ENS in October. The number of patients in member panels exceeded 1 million in October. The development team continues to monitor feeds from data sources and load updated patient panels when received from participants.

Patient Look-Up (PLU) production nodes include Strategic Health Intelligence, Memorial Healthcare System, Florida Hospital/Adventist Health System, UF Health, Broward Health, Martin Health System, Bethesda Health, Senior Home Care – (an affiliate of Kindred at Home), Orlando Health, and Tampa Bay HIE. PLU produced 763 successful transactions during the month of October. The PLU deployment team continued the onboarding progress with Community Health IT and Florida Accountable Care Services. An Action Plan was submitted to address an issue with automated queries from Florida Hospital and Tampa Bay HIE's All Children's hospital and work continues to be worked as a high priority.

2. Adoption and Utilization Statistics

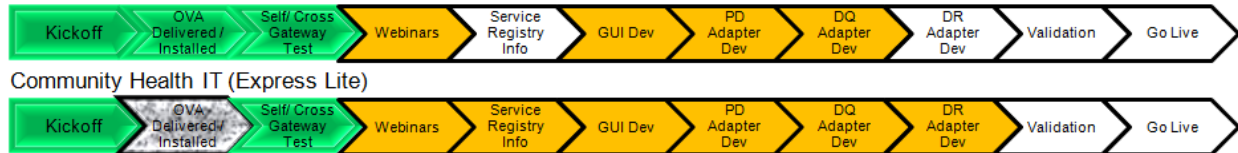
a) PLU Deployments

- Production Deployments
 - Strategic Health Intelligence (SHI)
 - No requests for support this period
 - Memorial Healthcare System (previously Atlantic Coast HIE (ACH))
 - Configured production Express Lite to send to Memorial production Epic
 - Florida Hospital
 - Continue to work to correct issue with retrieving DeferredCreation documents
 - Continued investigation of data availability (pre-fetching) service performance

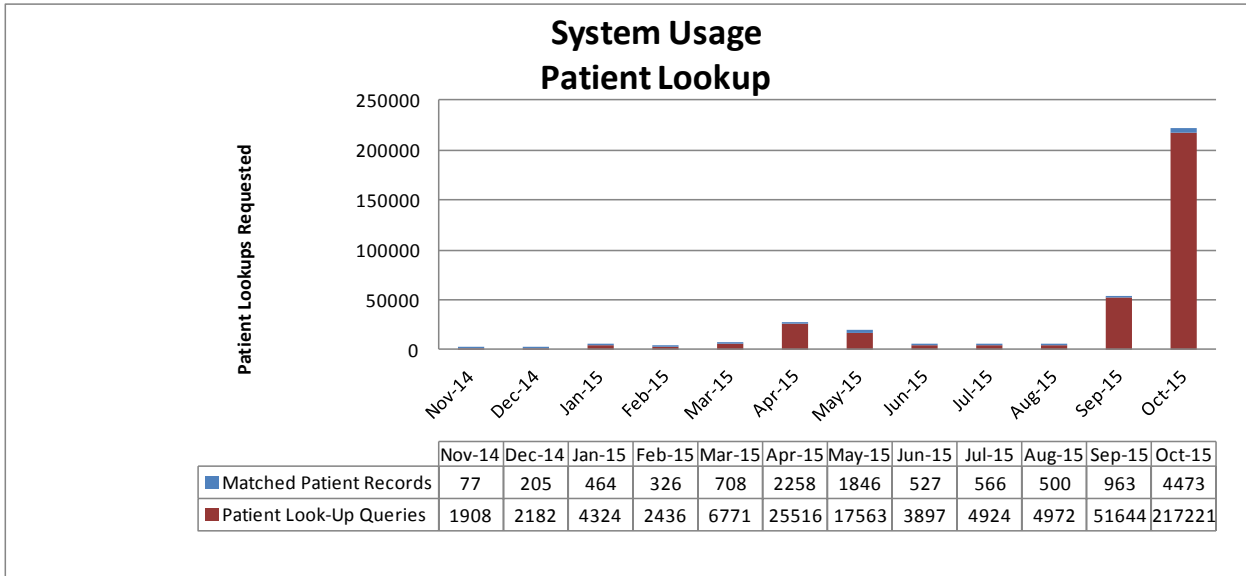
- UF Health
 - Resolved certificate issue with Epic upgrade
 - Started investigating patient match issue due to Epic upgrade that included endpoint upgrade and configuration updates
 - Resolved security header issue with Epic upgrade
- Broward Health
 - Continued to work to add DeferredCreation status to requesting for documents
 - Added DeferredCreation status to requesting for documents
 - Renewed certificate
 - Continue to analyze why some patient matches do not initiate a query for document
- Martin Health
 - Renewed certificate
 - Upgraded Mirth Connect
- Bethesda Health
 - Debugged firewall issue that was preventing test patient matches
- Senior Home Care
 - No requests for support this period
- Orlando Health
 - Supported testing vendor upgrade to retrieve large documents
- Tampa Bay Health Information Exchange
 - Continued work towards connecting All Children's Hospital
 - Altered timeout in Aurion to meet Resonance timeout values
 - Limited unnecessary logging
 - Turned off unused policy engine
 - Comparing settings between standalone Aurion install and Express Lite configuration
 - Limited Tampa Bay HIE to targeted broadcast to 3 nodes then increased to targeted broadcast to 4 nodes which caused an issue to be investigated
 - Collecting and analyzing CPU and memory usage (including Aurion and database usage)
 - Saving additional logs to analyze history
 - Investigating some ALTM anomalies based on large number of queries
 - Understanding more about the All Children's Hospital feed
 - Discussed load balancing with Tampa Bay HIE vendor

- Deployments in work
 - Florida Accountable Care Services (ACO)
 - Altered default gateway to Entity layer architecture
 - Defined patient discovery web service
 - Continued to work patient discovery web service
 - Community Health IT (Relay Health)
 - Continued work on patient discovery, document query and document retrieve in the development and test environments
 - Configured integration environment network
 - Executed all prevalidation tests
 - Determined that SSN is not used for matching and SSN tests are not needed for prevalidation or validation
 - Provided feedback to half of the prevalidation tests
 - Department of Health (DOH)
 - No requests for support this period
 - CHSPSC Florida Affiliates (Community Health Systems Professional Services Corporation)
 - CHSPSC Terminated subscription agreement
 - Revoked certificate

Florida Accountable Care Services Deployment Status (Express Lite)



b) PLU Transactions

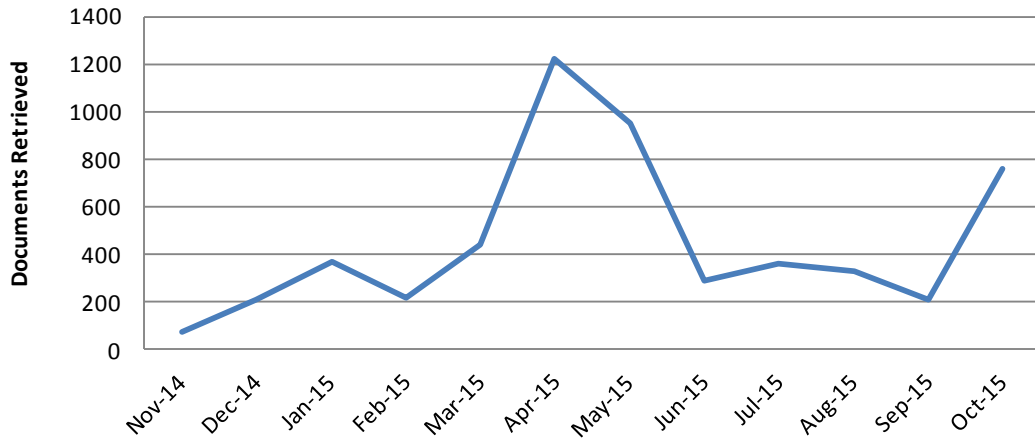


Note: Metrics vary significantly due to new participant testing during implementation and/or participant workflow changes. Consequently, metrics do not represent a continuous trend cross all reported periods. Specifically the number of PDs increased because the All Children's Hospital automated queries were initiated from Tampa Bay HIE several times this month. The Tampa Bay HIE queries were targeted to a subset of Florida HIE nodes (Orlando Health, UF Health with some additional testing with Florida Hospital and Broward Health). Also the Florida Hospital Data Availability services which had been off was turned on several times during the month to analyze issues. Orlando Health and the UF Health's query numbers are the largest because they are targeted by Florida Hospital and Tampa Bay HIE.

October 2015 Node Inbound Transactions

Node	Matched Patient Records	Patient Look-Up Queries	Total Inbound Patient Discovery
Bethesda Health	0	7444	7444
Broward Health	42	49801	49843
Florida Hospital	1987	44888	46875
Martin Health System	6	7375	7381
Memorial Healthcare System	1	3561	3562
Orlando Health	1199	48732	49931
Senior Home Care	29	7357	7386
Strategic Health Intelligence	12	7433	7445
Tampa Bay HIE	160	1775	1935
UF Health	1037	38855	39892
Totals	4473	217,221	221,694

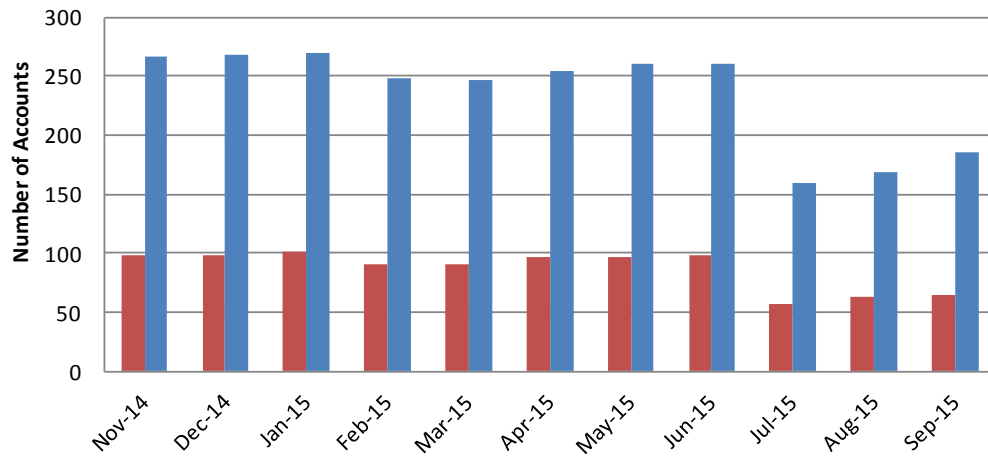
Patient Look-Up Documents Retrieved



	Nov-14	Dec-14	Jan-15	Feb-15	Mar-15	Apr-15	May-15	Jun-15	Jul-15	Aug-15	Sep-15	Oct-15
Documents Retrieved	77	212	368	217	437	1222	951	290	360	326	213	763

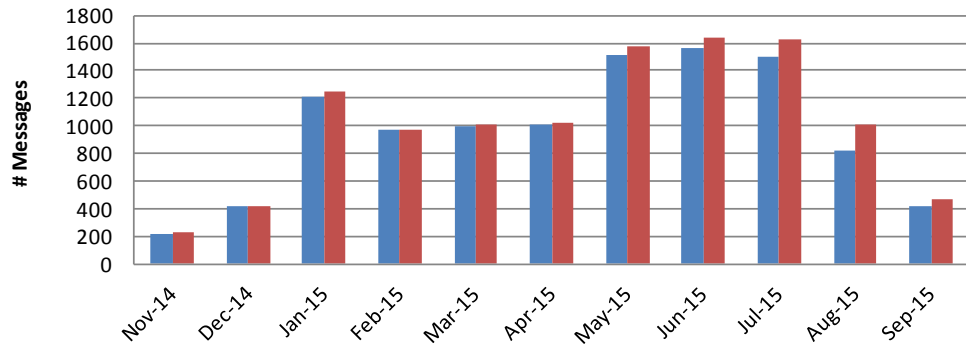
c) Direct Messaging Registrants and Transactions

Direct Messaging Registrants



	Nov-14	Dec-14	Jan-15	Feb-15	Mar-15	Apr-15	May-15	Jun-15	Jul-15	Aug-15	Sep-15
Direct Messaging Accounts	99	98	101	91	91	96	97	99	57	63	64
Direct Messaging Users	267	268	269	248	247	254	260	260	160	169	186

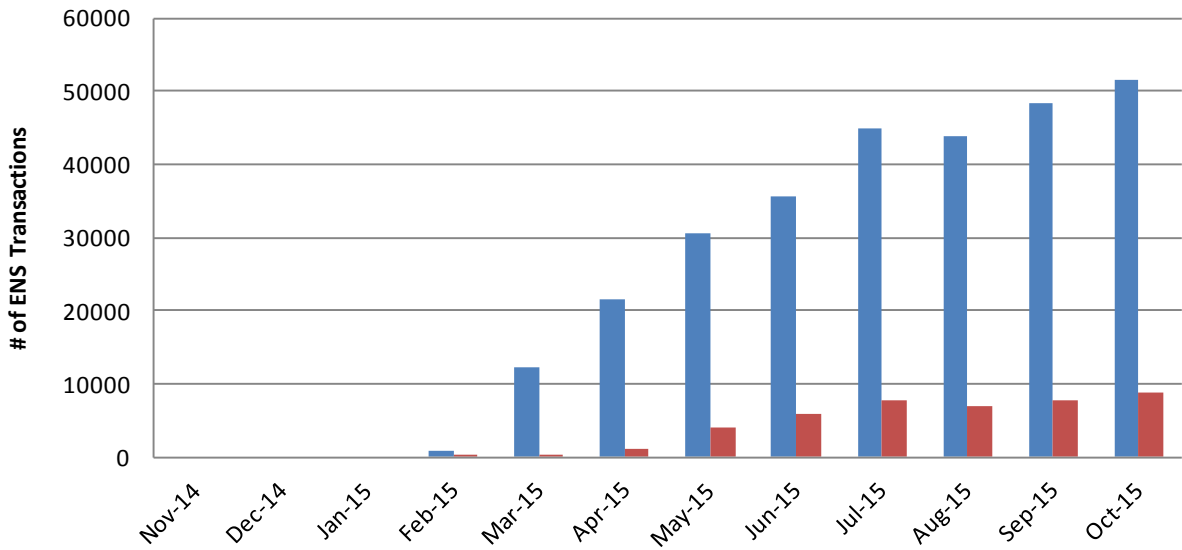
Direct Messaging Transactions



	Nov-14	Dec-14	Jan-15	Feb-15	Mar-15	Apr-15	May-15	Jun-15	Jul-15	Aug-15	Sep-15
# Messages Received by Account	221	412	1213	969	994	1013	1509	1565	1504	815	416
# Messages Originated by Account	225	417	1254	969	1003	1022	1580	1642	1623	1014	468

d) ENS Transactions

ENS Transactions



	Nov-14	Dec-14	Jan-15	Feb-15	Mar-15	Apr-15	May-15	Jun-15	Jul-15	Aug-15	Sep-15	Oct-15
Subscribers	0	0	0	955	12,198	21,618	30,572	35,501	44,955	43,925	48,483	51,502
Hospitals*	0	0	0	64	400	1,189	4,164	5,833	7,733	6,952	7,681	8,726

*Transactions to the hospitals are copies of the subscriber transactions that originated from requesting hospitals

Subscribers	Panel Size								
	Feb-15	Mar-15	Apr-15	May-15	Jun-15	Jul-15	Aug-15	Sep-15	Oct-15
WELLCARE	36,926	36,926	36,926	36,926	38,832	39,506	37,757	37,661	37,838
SUNSHINE		421,426	421,426	435,218	437,329	437,329	437,329	452,768	452,768
INTEGRAL			90,400	90,400	90,400	90,400	90,400	90,400	90,400
MOLINA					352,577	342,055	342,055	342,055	342,055
PRIMARY PARTNERS						3,973	3,973	5,088	5,088
PALM BEACH ACO								7,727	7,917
ACCNWFL								4,578	4,578
SFCCN									92,205
Total	36,926	458,352	548,752	562,544	919,138	913,263	911,514	940,277	1,032,849

- Health Plans enrolled
 - WellCare
 - Sunshine State Health Plan
 - Molina Healthcare of Florida
 - Integral Quality Care (Transitioned to Molina as of November 1, 2015)
 - South Florida Community Care Network
- Accountable Care Organizations (ACO) enrolled
 - Primary Partners
 - Palm Beach Accountable Care Organization
 - Aledade
 - Accountable Care Coalition of Northwest Florida
 - US Medical Management
 - Accountable Care Medical Group
 - AllCare Options
 - Accountable Care Options
 - Health Choice Care
 - Orange Accountable Care of South Florida
- 211 Hospitals enrolled as data sources
 - 205 connected to ENS in production
 - Adventist Health System
 - All Children’s Health System
 - Ann Bates Leach Eye Hospital
 - Baker County Ed Frasier
 - Baptist Health Care
 - Baptist Health South Florida
 - Baptist Health System
 - Bartow Regional Medical Center

- Bay Care Health System
- Bay Medical Center
- Bayfront Health Brooksville Springhill
- Bayfront Health Port Charlotte*
- Bayfront Health Punta Gorda*
- Bayfront Health St. Petersburg
- Bert Fish Medical Center
- Bethesda Hospital
- Boca Raton Regional Hospital
- Broward Health
- Calhoun Liberty Hospital
- Central Florida Health Alliance
- Charlotte Regional Medical Center
- Citrus Memorial Health System
- Desoto Memorial Hospital
- Doctors Bonifay
- Doctors Memorial Hospital (Perry)
- Fishermen’s Hospital*
- Flagler Hospital
- Florida Hospital
- Halifax Hospital Medical Center
- HCA
- Healthcare District of Palm Beach County/Lakeside Medical Center
- Health Central Hospital
- Health First
- Healthmark Regional Medical Center
- Heart of Florida
- Hendry Regional Medical Center
- Highlands Regional Medical Center
- H. Lee Moffitt Cancer Center
- Indian River Memorial Hospital
- Jackson County Hospital District
- Jackson Health System
- Jupiter Medical Center
- Lake Butler Hospital
- Lake Wales Medical Center
- Lakeland Regional Medical Center

- Larkin Community Hospital
- Lee Memorial Health System
- Lehigh Regional Medical Center
- Lower Keys Medical Center
- Madison County Hospital
- Manatee Healthcare System
- Martin Health System
- Memorial Healthcare System
- Miami Children’s Hospital
- Mount Sinai Medical Center
- Munroe Regional Medical Center
- Naples Community Hospital
- North Okaloosa Medical Center*
- Northwest Florida Community Hospital
- Orlando Health System
- Parrish Medical Center
- Pasco Regional Medical Center
- Peace River Regional Medical Center
- Physicians Regional Medical Center
- Regional General Hospital Williston
- Sacred Heart Health System
- Santa Rosa Medical Center
- Sarasota Memorial Hospital
- Sebastian River Medical Center*
- Seven Rivers Regional Medical Center*
- Shands Lake Shore
- Shands Live Oak
- Shands Stark Regional Medical Center
- St. Cloud Regional Medical Center
- St. Vincent’s Health System
- Tallahassee Memorial Healthcare
- Tampa General Hospital
- Tenet Florida
- UF Health
- University of Miami
- University of Miami Hospital and Clinics
- Weems Memorial Hospital

- Wellington Regional Medical Center
- Wuesthoff Medical Center Melbourne
- Wuesthoff Medical Center Rockledge

* Data Sources that signed the ENS Subscription Agreement but are not yet in production

3. Quarterly Plans

a) PLU Deployments

#	Facilitated On-Boarding Node Name	Go Live	Express Lite	Q1'14			Q2'14			Q3'14			Q4'14			Q1'15			Q2'15			Q3'15			Q4'15			Q1'16		
				J	F	M	A	M	J	J	A	S	O	N	D	J	F	M	A	M	J	J	A	S	O	N	D	J	F	M
1	Strategic Health Intelligence (SHI)	May-12	Express Lite																											
2	Memorial Healthcare System	Mar-13	Express Lite																											
3	Florida Hospital	May-13	Express Lite																											
4	UF Health	May-13	Express Lite																											
5	Broward Health	Sep-13	Site Services																											
6	Martin Health	Mar-14	Express Lite	-	-	X																								
7	Bethesda Health	May-14	Express Lite	-	-	-	-	X																						
8	Senior Home Care	Jul-14	Express Lite	-	-	-	-	-	-	X																				
9	Orlando Health	Dec-14	Express Lite	-	-	-	-	-	-	-	-	-	-	X																
10	Tampa Bay HIE	May-15	Site Services				X																							
11	Community Health IT		Express Lite				X																							
12	Department of Health (DOH) - Public Health Queries		Express	-	-	-	-	-	-	-	-	-	-	-	-	-	-	-	-	-	-	-	-	-	-	-	-	-	-	
13	FL Accountable Care Services (FACS)		Express Lite	-	-	-	-	-	-	-	-	-	-	-	-	-	-	-	-	-	-	-	-	-	-	-	-	-	-	
# Concurrent				6	6	6	6	7	6	6	5	5	5	5	5	4	4	4	4	3	3	3	3	3	3	3	2	2	2	

Note: Dates above represents best estimates for planning and logistical purposes and will be updated on an ongoing basis as new data is learned.

b) ENS Deployments – Hospitals

Monitor performance, maintain as required, and add data sources as they enroll

Data Source to be connected

- Bayfront Health Port Charlotte
- Bayfront Health Punta Gorda
- Fishermen’s Hospital
- North Okaloosa Medical Center
- Sebastian River Medical Center
- Seven Rivers Regional Medical Center

c) ENS Deployments – Health Plans/ACOs

<u>Organizations</u>	<u>Initial Member #</u>	<u>Target Start Date</u>
AvMed	300,000	January 2016