



Florida Association of Community Health Centers Low Income Pool Proposal

December 2, 2009

Andrew R Behrman, MBA
President & CEO
Florida Association of Community
Health Centers, Inc.



- Florida's Federally Qualified Health Centers (CHCs) serve as safety-net providers for all Floridians, delivering health care services to the state's most vulnerable citizens regardless of their ability to pay.
- CHCs provide a special focus on making health care available and accessible to low income families, to the uninsured and Florida's most vulnerable groups.
- CHCs Provide quality, cost-effective care in an ethnically and culturally responsive manner.

Mandatory Services FQHCs Provide

- Primary medical care
- Chronic disease management
- Dental services
- Vision services
- Diagnostic laboratory and radiological services
- Immunizations
- Full range of pediatric services
- Pharmaceutical services
- Substance abuse services and
- Mental health care services.
- Emergency and urgent medical services
- Prenatal care, cancer and other disease screenings
- Case Management
- Specialty Referrals
- Outreach
- Transportation
- Interpreters
- Patient Education
- Family planning services

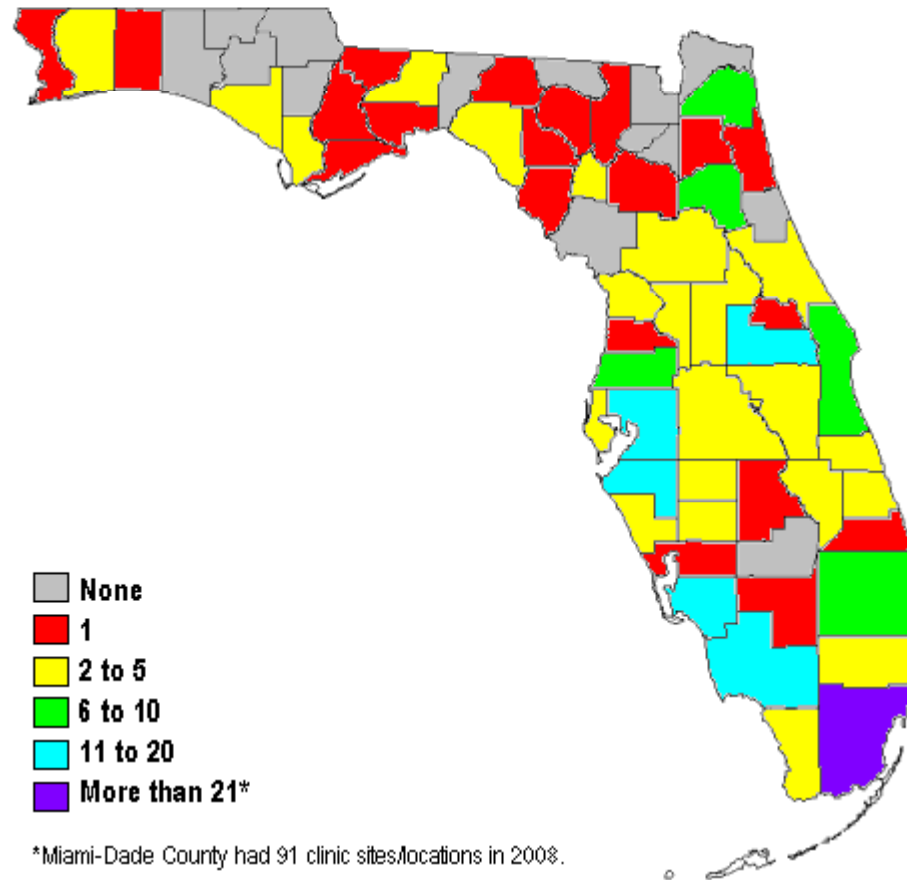


There are now 44 FQHCs operating in Florida and these organizations currently provide quality health care in more than 260 service locations.

In 2008 (most recent data) Florida's Community Health Centers:

- Saw an additional:
 - 98,872 new patients (877,322 total patients)
 - Since LIP began, FQHCs have seen nearly 300,000 new patients – of which approx. 130,000 were uninsured
 - 355,155+ new patient encounters (3,329,238 total encounters)
- Expanded the number of center locations by 75 since 2004, bringing the total number of sites to over 260 to serve those additional patients
- Among the most critical shortages of providers, we expanded our dental staffs by nearly 16%
- Increased the number of FTEs by 45% since 2003

2008 Geographic Distribution of Community Clinic Sites

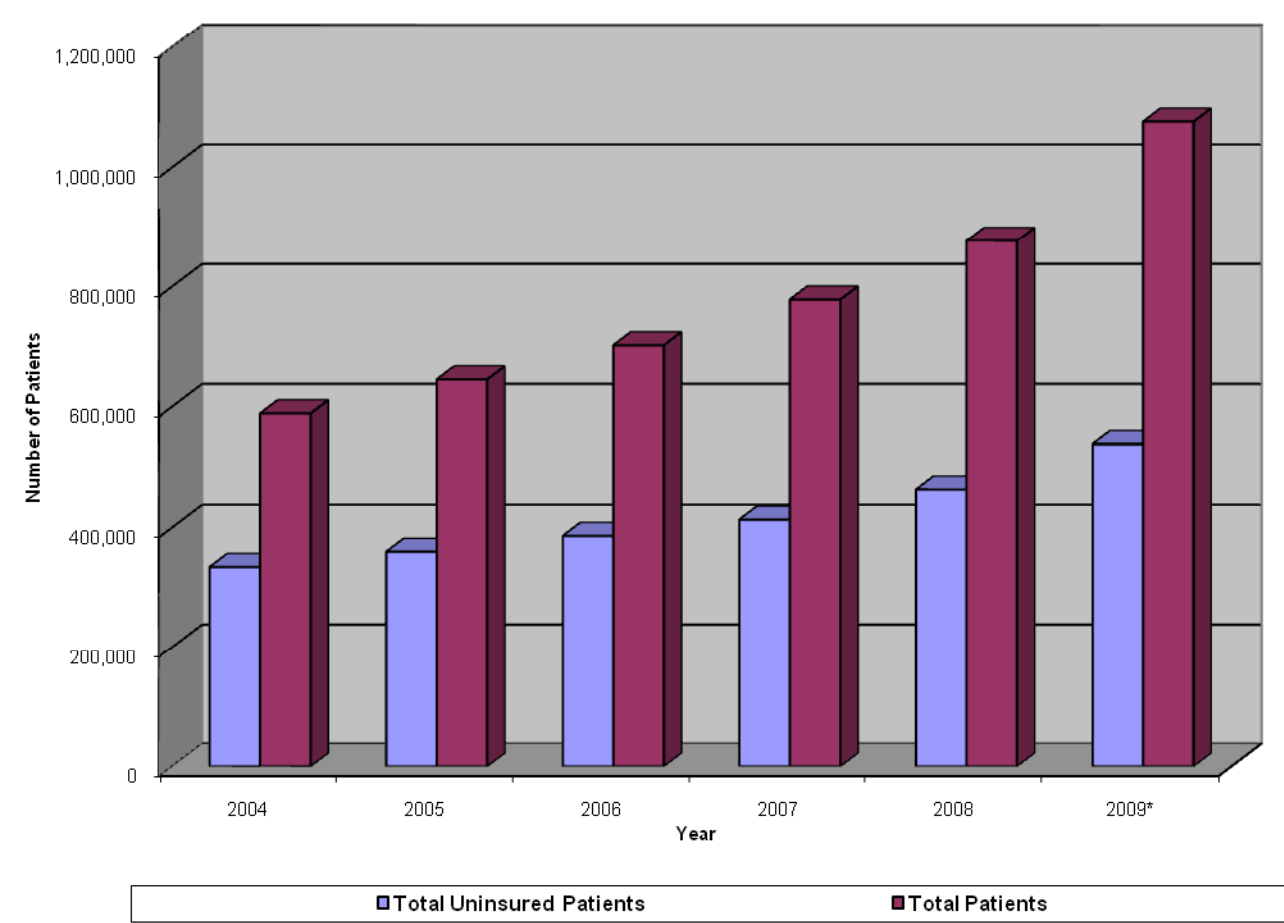




	<u>2004</u>	<u>2005</u>	<u>2006</u>	<u>2007</u>	<u>2008</u>
<u>Total Patients</u>	588,799	645,379	702,188	778,450	877,322
<u>Total Uninsured Patients</u>	334,284	359,660	386,137	413,420	463,147
<u>Total Patient Encounters</u>	2,351,108	2,568,526	2,799,489	2,974,083	3,329,238
<u>Total Clinical Providers</u>	1,802	1915	2,055	2,266	2,528
<u>Number of service locations</u>	179	193	219	221	>260
<u>Dental Service FTEs</u>	207	214	247	273	305
<u>ER Diversion Projects</u>	-	1	3	6	15



Community Health Center Patient Numbers 2004-2009*



* 2009 data are conservatively projected, based on historical data

Samples of specific LIP fund successes at Florida FQHCs.

- Camillus Health Concern expanded primary care services at **2 new locations** for the homeless in Miami-Dade County. Specifically **adding dental and mental health services**. There was an increase of 5.7% in total patients served and 13.2% in total patient encounters. The funds also purchased supplies, **support for a Dental Director**.
- The uninsured served at Lakeland Primary Care increased from 60% to over 75%. The health center recruited **new providers, expanded service hours**, and maintained services (lab, x-ray, pharmacy, etc).
- C.L. Brumback Community Health Center **added Saturday hours at 3 clinic locations** and now provide financial counselors at all sites to assist uninsured clients with insurance applications.
- Manatee County Rural Health Services, Inc. created a **new access point in Arcadia** for optometry services, **expanded hours of operation for dental services, added OB/GYN services and a mid level family practitioner** at the Edgar Price Family Health Care Center, added gastroenterology services, and added a general surgeon.
- PanCare Community Health Center in Bay County **started a pharmacy program to give uninsured patients better access to prescription drugs**. PanCare **expanded services by adding evening hours and two medical providers**.
- North Florida Medical Centers, Inc. **added a new primary care location in Baker and added a pediatrician in Crestview**.



Samples of specific LIP fund successes at Florida FQHCs, continued

- Trenton Medical Center **added 3 new locations**: Williston, Chiefland, and Gainesville. The medical center also **added seven new providers**.
- Community Health of South Florida, Inc. added 7074 patients, **added 2 more physicians, added OB/GYN hours at 2 locations, added 11 more school based locations, increased dental staff by 10 more FTEs, and added dental services at several elementary schools**.
- Florida Community Health Centers **added another pediatrician** to the Port St. Lucie Children's Health Center and **added an adolescent health program** at that site. The health center is seeing an additional 600 teens/adolescents.
- Community Health Centers, Inc. **added 4 providers to serve in 4 different communities in Orange County**.
- Northeast Florida Medical Services **opened a new location in Deltona**. It also **launched a pharmacy program and extended hours of service in two locations**.



Potential Primary Care Savings

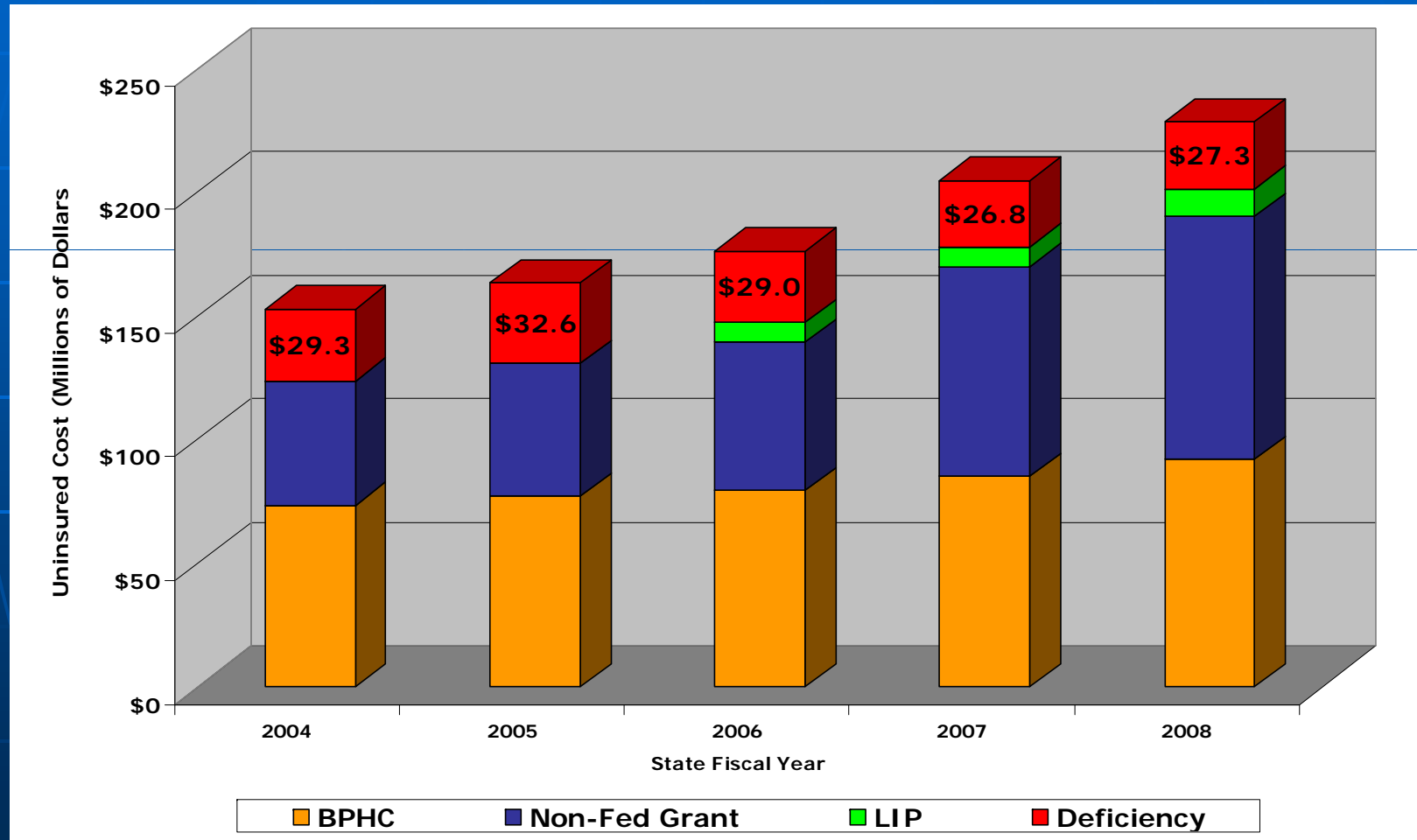
- All studies of medical home/primary care demonstrations conducted nationwide have resulted in cost reductions, resource improvements, and better patient outcomes.
- A study by the George Washington University School of Public Health and Health Services* revealed that the calculated value of this approach, delivered through FQHCs:
 - Increased investment in community based primary care could result in:
 - \$4.7 billion reduction in emergency care expenditures
 - \$720 - \$794 million in savings due to improved access
 - \$7 million in new economic activity and 83 new jobs for every \$1 million invested in FQHCs – **EVERY DOLLAR SPENT RETURNS SEVEN!**

FACHC

FACHC Proposal

- FQHCs continue the commitment made to this council, AHCA, the Legislature, and the people of Florida to open our doors to see all patients.
- Throughout this program we have partnered with hospitals, health departments and other providers to make sure all people have a place to get health care.
- FQHCs have been underfunded in this effort since LIP began.
- The FQHC program will continue to expand its services to greater numbers of uninsured via the site expansion, increased hours and additional services in existing locations.

FQHC Funding Breakdown



Recommendation

- FQHCs should receive \$30M (\$18M net of IGT) additional LIP funds to cover the uninsured, as was intended by the Waiver!
- A \$30M investment will return \$210M in accountable services and patient care.
- Organizations receiving LIP funds must show accountability to this council and to the legislature prior to new funding.
- FQHCs should have access to any unused funds, so long as they can provide the local match.
- Total Recommended funding should be set at \$48M (\$28.8 net of IGT)