



Rick Scott  
Governor

John H. Armstrong, MD  
Surgeon General

---

July 31, 2012

To Whom It May Concern:

Please find the attached application for the Lip Enhanced Primary Care project grant. Liberty County Health Department, in collaboration with the Calhoun County Health Department and Liberty Community Health Care would appreciate your consideration for award. Calhoun and Liberty County are rural areas with limited health care resources. Receipt of the requested funding of \$250,000 would greatly enhance services provided in the clinics and provide for much needed additional services.

Thank you for any assistance you may offer to our counties. If I can be of further assistance, please do not hesitate to call.

Regards,

A handwritten signature in blue ink that reads "Rachel Manspeaker".

Rachel Manspeaker  
Administrator  
Calhoun County Health Department  
Liberty County Health Department

---

Liberty County Health Department  
P.O. Box 489 • Bristol, FL. 32321  
Phone: 850-643-2415 • Fax: 850-643-5689

**1. Applicant:**

This funding is being applied for by the Liberty County Health Department, in partnership with, Calhoun County Health Department and Liberty Community Health Care.

- Liberty County Health Department  
12832 NW Central Avenue  
Bristol, FL 32321  
850-643-2415
- Calhoun County Health Department  
19611 SR 20W  
Blountstown, FL 32424  
850-674-5645
- Liberty Community Health Care  
10971 NW Spring Street  
Bristol, FL 32321  
850-643-2292

**2. Medicaid Provider Number:**

027949800

**3. Provider Type:**

The Calhoun and Liberty County Health Departments are county health departments entities. The Liberty County Health Department is a co-applicant for the federally qualified health center, Liberty Community Health Care.

**4. Amount Applying For:**

\$250,000

**5. Identify as new or enhanced:**

The additional funds from this grant would allow for enhanced women's health and pediatric services and expansion of infrastructure to treat patients by providing specialty providers and services that are not provided within the current setting.

**6. Description of the delivery system and affiliations with other health care service providers:**

Health care services are provided by a partnership between local county health departments and a public federally qualified health center. Contract arrangements are made with obstetricians in Tallahassee and Marianna for continuity of care for obstetrical care.



## **7. Service Area:**

The funding will be utilized to provide services to multiple counties. The catchment area to be served includes all of Calhoun and Liberty Counties, as well as portions of Gadsden and Franklin Counties.

## **8. Service Area Characteristics:**

The target population in the catchment areas consists of Calhoun County , Liberty County, the census tracts of 204 and 208 of Gadsden County and the community of Eastpoint located in Franklin County. All of these areas have very similar characteristics with being rural areas with limited resources. There is a small hospital in Blountstown, the county seat of Calhoun County, however it provides limited services and does not provide obstetrical services or many other services needed by clients. This area is recognized as a designated health care professional shortage area. There are six practicing physicians in Calhoun and Liberty Counties, none which are specialty providers.

A significant barrier to care, in all parts of the catchment area, is transportation to, and isolation from, health care providers. Many services require clients to travel outside of the area. Recent funding cuts have adversely impacted the ability of the local Transportation Disadvantaged providers to provide for the needs of the community. Public transportation is limited to those with Medicaid and its availability to Tallahassee, Panama City or Marianna, only on specific days and with 72 hours prior notice.

The U.S. Department of Commerce, U.S. Census Bureau estimated the 2011 Calhoun and Liberty Counties combined population to be 22,899. These neighboring counties in the Panhandle of Florida are located approximately 50 miles from Tallahassee and Panama City. Both are rural counties with the majority of the population residing in clustered unincorporated areas in isolated parts of the counties.

### *Calhoun County*

Calhoun County Calhoun County is a rural county that measures 567.33 square miles in length. It has a 2010 population of 14,625 (US Census). Its county seat, Blountstown, is the largest municipality with 2478 of the county's residents in this area. Its other incorporated area is the town of Altha with a population of 513. The US Census reports, 21.4% of the population of Calhoun County are under the age of eighteen. 28% of our residents do not have a high school diploma or its equivalent compared to State's 15% (US Census). The median household income listed for 2009 is \$32,920, a full \$11,835 dollars below the State rate (US Census). In 2009, according to the US Census, 20.8% of the population lived below poverty level. The 2010



population for Calhoun County consists of 80.8 % of the population is white, 13.8% is black, 6.4% identify as Hispanic or Other (US Census). Utilizing the Federally Qualified Health Care Facility and County Health Department's service records, there appears to be a larger number of Hispanics than those documented. The largest employer in our area is the State of Florida with many being employed at the prison. The only other large employer is the Calhoun County School System.

### Calhoun Demographic and Health Status Indicators:

Pregnancy and Young Child Profile, Calhoun County						
Measure	Rate Type	Year(s)	County Quartile 1=most favorable 4=least favorable	County Number	County Rate	State Comparison
<b>Community Characteristics</b>						
<a href="#">Median household income (in dollars)</a>	Dollars	2006-10	4	\$31,699		\$47,661
<a href="#">Residents below 100% poverty</a>	Percent total population	2010	4	2,908	20.00%	12.50%
<a href="#">Little English spoken in family (linguistically isolated)<sup>1</sup></a>	Percent	2006-10	3		2.90%	7.20%
<b>Birth Family Characteristics</b>						
<a href="#">Births to mothers ages 15-19</a>	Per 1,000 females 15-19	2008-10	4	27	59.7	37
<a href="#">Births to mothers born in other countries</a>	Percent of births	2008-10	4	7	4.00%	31.20%
<b>Pre-conception Health and Behaviors</b>						
<a href="#">Births with inter-pregnancy interval &lt; 18 months</a>	Percent of births	2008-10	4	46	48.80%	38.00%
<b>Pregnancy and Health Behaviors</b>						
<a href="#">Births to mothers who report smoking during pregnancy</a>	Percent of births	2008-10	4	34	20.50%	6.90%
<b>Access to Services</b>						
<b>Well-Woman/Pre-conception care</b>						
<a href="#">Females &gt; 17 with pap smear in preceding year</a>	Percent of females > 17	2010	4		47.10%	57.10%
<a href="#">Females &gt; 17 who have any type of health care insurance coverage</a>	Percent of females > 17	2010	4		75.80%	84.20%
<b>Pregnancy</b>						
<a href="#">Births with late or no prenatal care immunizations</a>	Percent of births w/ known PNC status	2008-10	2	6	4.00%	5.10%
<a href="#">Two-year olds fully immunized<sup>10</sup></a>	Percent of 2-yr olds	2010				81.10%
<a href="#">Kindergarten children fully immunized</a>	Percent of KG students	2010	4	170	92.90%	91.30%

Source: Florida Department of Health CHARTS

Additional Calhoun Demographic and Health Status Indicators with HP 2020 Goals Provided by Florida Department of Health CHARTS:

Indicator	Year(s)	Rate Type	County Quartile <sup>A</sup> 1=most favorable 4=least favorable	County Rate	State Rate	Healthy People 2020 Goals <sup>C</sup>
<b>Socio-Demographics</b>						
Population that is linguistically isolated <sup>2</sup>	2006-10	Percent	3	2.90%	7.20%	
Population over 25 without high school diploma or equivalency <sup>2</sup>	2006-10	Percent	4	25.90%	14.70%	
Total licensed family physicians <sup>4</sup>	2008-10	Per 100,000	1	23.2	22.9	
<b>Cervical Cancer</b>						
Cervical cancer age-adjusted death rate <sup>7</sup>	2008-10	Per 100,000	4	5.2	2.7	2.2
Women 18 years of age and older who received a Pap test in the past year <sup>1</sup>	2010	Percent	4	47.10%	57.10%	93%
<b>Maternal, Infant &amp; Young Child Health</b>						
Early prenatal care (care began 1st trimester) <sup>7, 13</sup>	2008-10	Percent	2	80.00%	78.10%	77.90%
Infant death rate <sup>7</sup>	2008-10	Per 1,000 live births	3	8	6.9	6
<b>Potentially Avoidable Hospitalizations</b>						
Asthma hospitalizations ages 1-5	2008-10	Per 100,000 population 1-5	3	7	874.9	852

The chart below provided by ACHA outlines the Medicaid eligible individuals in Calhoun County.

NUMBER OF MEDICAID ELIGIBLES BY AGE BY COUNTY AS OF 4/30/2012 PLUS MEDIKIDS A, MEDIKIDS B, & MEDIKIDS C											
AGE	0-5	6-10	11-18	19-20	21-35	36-59	60-64	65-74	75-84	85+	TOTAL
COUNTY											
CALHOUN	631	386	459	67	430	470	119	229	157	85	3,033



## Liberty County

Liberty County measures 835.56 square miles in length with a 2010 population of 8,365(US Census). It should be noted that this is a large area and services must be provided to many outlying areas. The largest municipality is Bristol (population 950) and the only other city of noted size is Hosford (unincorporated population 1841). The 2010 census reports 77.3 % of the population is white, 17.9% is black, and 6.2% are persons of Hispanic or Latino origin. However, service records from the Federally Qualified Health Care Facility and the County Health Department reflect a larger number of Hispanics than those documented by the Census. In Liberty County, 21.2% of the population is under the age of eighteen, 24.4% of residents do not have a high school diploma or its equivalent, 23.1% of the population lived below poverty level with the 2009 median household income of \$36,809 being well below the state average of \$44,755. The largest employer in our area is the State of Florida followed by the Liberty County School System.

Liberty County Demographic and Health Status Indicators with HP 2020 Goals Provided by Florida Department of Health CHARTS:

Indicator	Year(s)	Rate Type	County Quartile <sup>A</sup>  1=most favorable 4=least favorable	County	State	County Trend <sup>B</sup> (click to view)	Healthy People 2020 Goals <sup>C</sup>
				Rate	Rate		
<b>Socio-Demographic</b>							
Population that is linguistically isolated <sup>2</sup>	2006-10	Percent	1	0.40%	7.20%		
Population over 25 without high school diploma or equivalency <sup>2</sup>	2006-10	Percent	4	25.10%	14.70%		
<b>Health Status and Access to Care</b>							
Total licensed family physicians <sup>4</sup>	2008-10	Per 100,000	4	4	22.9		
<b>Cervical Cancer</b>							
Cervical cancer age-adjusted death rate <sup>7</sup>	2008-10	Per 100,000	1	0	2.7	No Trend	2.2
Women 18 years of age and older who received a Pap test in the past year <sup>1</sup>	2010	Percent	1	60.50%	57.10%		93%
<b>Maternal, Infant &amp; Young Child Health</b>							
Early prenatal care (care began 1st trimester) <sup>7, 13</sup>	2008-10	Percent	1	89.50%	78.10%		77.90%
Infant death rate <sup>7</sup>	2008-10	Per 1,000 live births	4	11.6	6.9	No Trend	6

## Liberty County Demographic and Health Status Indicators:

Pregnancy and Young Child Profile, Liberty County						
Measure	Rate Type	Year(s)	County Quartile 1=most favorable 4=least favorable	County Number	County Rate	State Comparison
<b>Community Characteristics</b>						
Median household income (in dollars)	Dollars	2006-10	3	\$40,777		\$47,661
Residents below 100% poverty	Percent total population	2010	4	1,632	19.90%	12.50%
Little English spoken in family (linguistically isolated) <sup>1</sup>	Percent	2006-10	1		0.40%	7.20%
<b>Birth Family Characteristics</b>						
Births to mothers ages 15-19	Per 1,000 females 15-19	2008-10	2	10	41.9	37
Births to mothers born in other countries	Percent of births	2008-10	3	7	7.80%	31.20%
<b>Pre-conception Health and Behaviors</b>						
Females > 17 who are current smokers	Percent of females > 17	2010	4		26.20%	16.00%
Births to obese mothers at time pregnancy occurred <sup>6</sup>	Percent of births	2008-10	4	26	29.80%	19.40%
<b>Pregnancy and Health Behaviors</b>						
Births to mothers who report smoking during pregnancy	Percent of births	2008-10	3	15	17.40%	6.90%
<b>Access to Services</b>						
<b>Well-Woman/Pre-conception care</b>						
Females > 17 with pap smear in preceding year	Percent of females > 17	2010	1		60.50%	57.10%
Females > 17 who have any type of health care insurance coverage	Percent of females > 17	2010	4		76.00%	84.20%
Two-year olds fully immunized <sup>10</sup>	Percent of 2-yr olds	2010				81.10%
Kindergarten children fully immunized	Percent of KG students	2010	1	115	100.00%	91.30%
<b>Potentially Avoidable Hospitalizations</b>						
Asthma hospitalizations ages 1-5	Per 100,000 population 1-5	2008-10	4	1289	1289	852.2

Source: Florida Department of Health CHARTS



The chart below provided by ACHA outlines the Medicaid eligible individuals in Liberty County.

**NUMBER OF MEDICAID ELIGIBLES BY AGE BY COUNTY AS OF 4/30/2012  
PLUS MEDIKIDS A, MEDIKIDS B, & MEDIKIDS C**

AGE	0-5	10-Jun	18-Nov	19-20	21-35	36-59	60-64	65-74	75-84	85+	TOTAL
COUNTY											
<b>LIBERTY</b>	318	221	333	51	195	244	44	78	50	11	1,545

*Other Catchment Areas:*

Due to the proximity and convenience, many residents of the most western portion of Gadsden County and those of the northern part of Franklin County utilize services of the clinic in Bristol for their health care needs. The census tracts 204 and 208 include the population of Greensboro. According to the U.S. Census Bureau Resident Population for Incorporated Places, Greensboro's population is 602. The demographics of this population include a significant number of Hispanic or Latino origin, including many migrants. Eastpoint is a census-designated place located in the northern area of Franklin County. The U.S. Census reports the population of Eastpoint at 2,158. Further breakdown of demographic information is not available at the community level however, it would stand to reason with other commonalities amongst the counties, these areas would have similar indicators.

**9. Organizational Chart and Point of Contact:**

Points of Contact:

- Rachel Manspeaker, Calhoun and Liberty CHD Health Officer  
850-643-2415 ext 250
- Kelly King, Calhoun and Liberty CHD Business Manager  
850-643-2415 ext 223



SIGNATURE \_\_\_\_\_

DATE 7/31/12

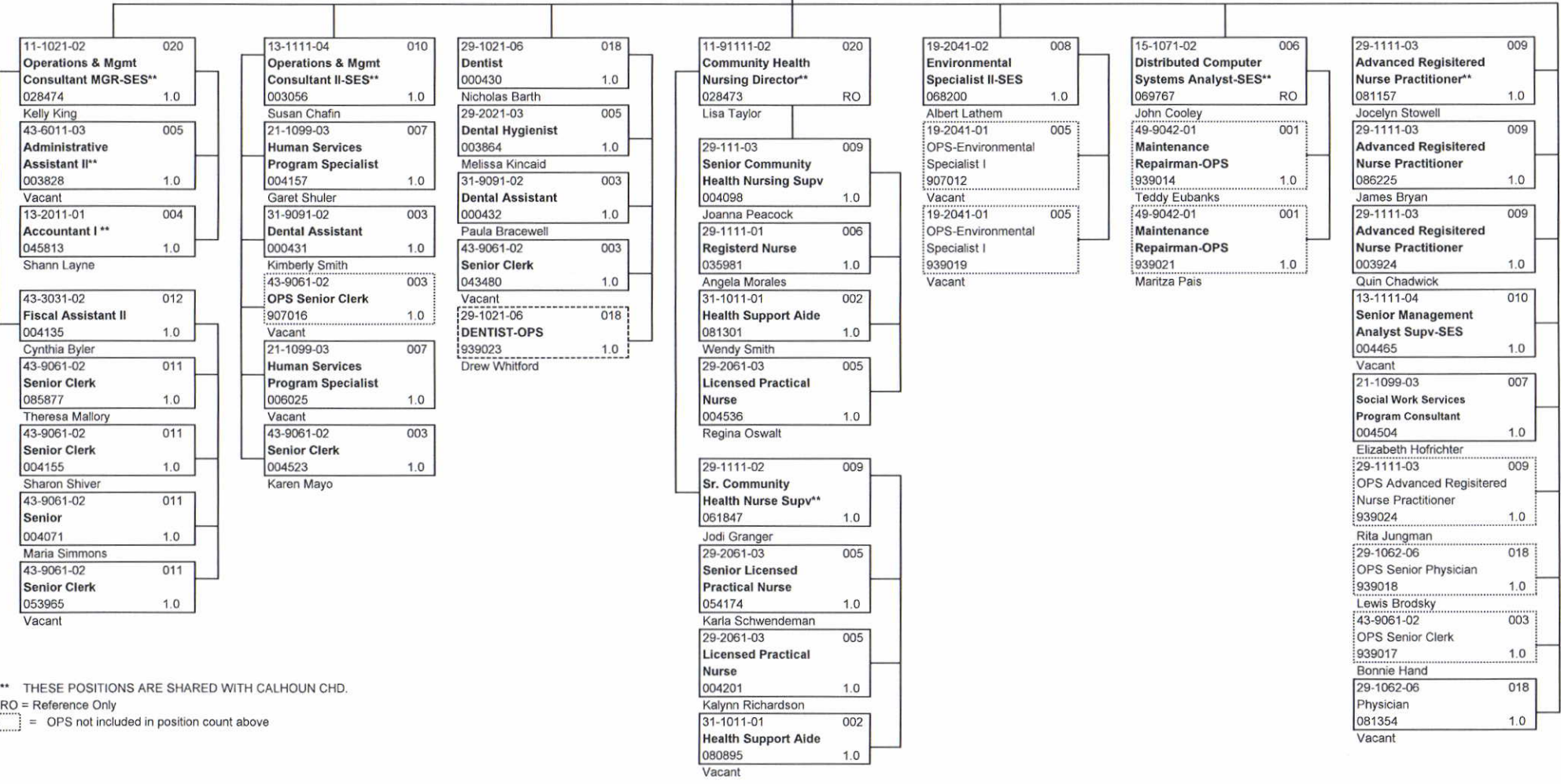
TABLE LIBERTY CHD

NUMBER OF POSITIONS \_\_\_\_\_

NUMBER OF FTE'S \_\_\_\_\_

NUMBER SHARED \_\_\_\_\_

10-9111-01	023
<b>County Health Department</b>	
<b>Director-Health**</b>	
002565	1.0
Rachel Manspeaker	



\*\* THESE POSITIONS ARE SHARED WITH CALHOUN CHD.  
 RO = Reference Only  
 [Dotted Box] = OPS not included in position count above

SIGNATURE \_\_\_\_\_

DATE 7/31/12

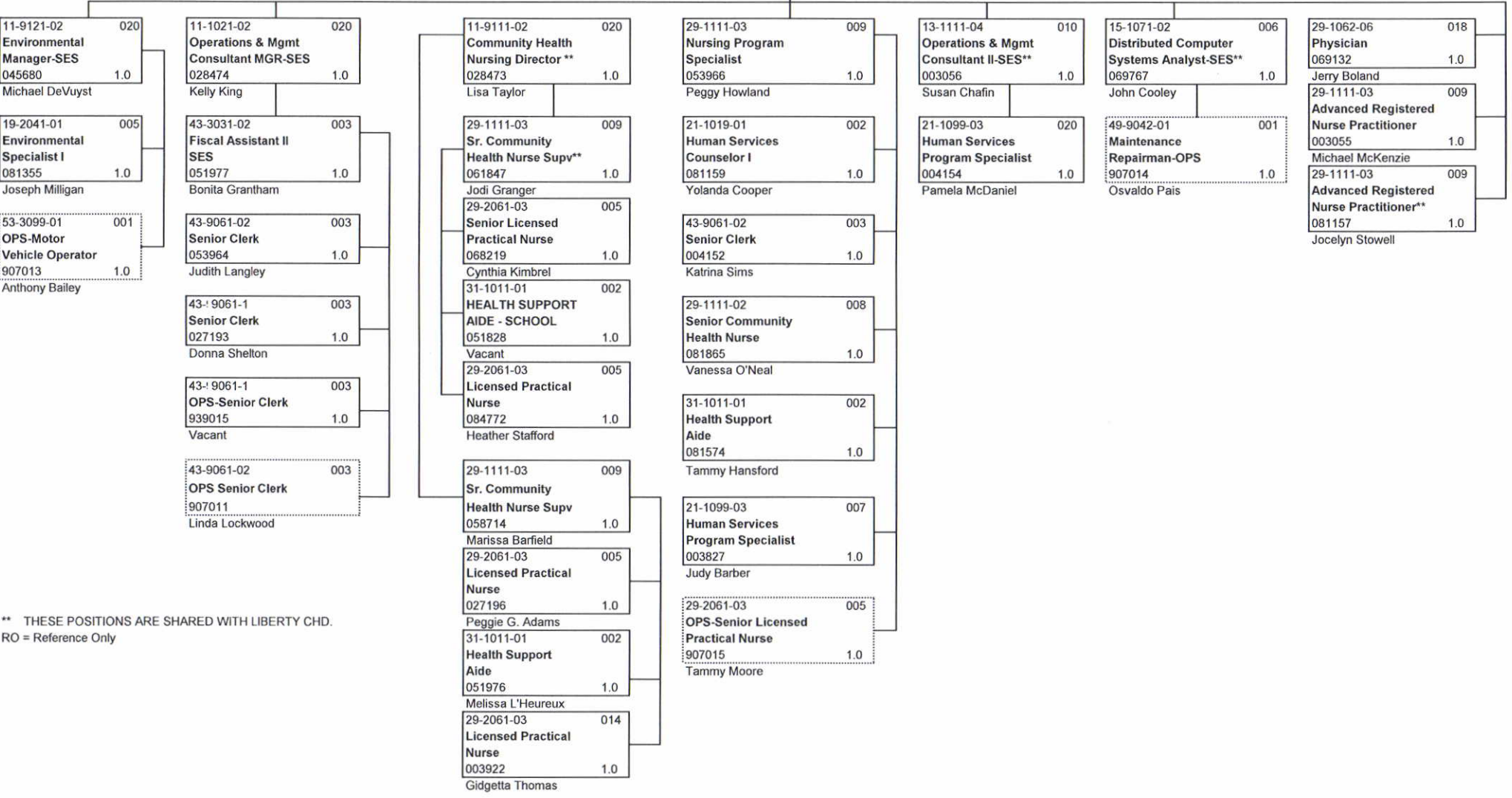
TABLE CALHOUN CHD

NUMBER OF POSITIONS \_\_\_\_\_

NUMBER OF FTE'S \_\_\_\_\_

NUMBER SHARED \_\_\_\_\_

10-9111-01	023
County Health Department	
Director-Health	
002565	1.0
Rachel Manspeaker	



\*\* THESE POSITIONS ARE SHARED WITH LIBERTY CHD.  
RO = Reference Only



## 10. Proposed Budget:

**BUDGET DETAIL**  
**July 2012-June 2013**

Statement of Revenues and Expenses	
<b>GRANT REVENUE</b>	
Local Match (42.27%)	105,675.00
State Match	0.00
Federal Match (55.94%)	144,325.00
Total Grant Revenue	250,000.00
<b>GRANT EXPENSES</b>	
Salary & Wages	179,394.00
Benefits	41,080.00
Supplies	679.00
Equipment	27,602.00
Contractual	1,245.00
Construction	0.00
Other	0.00
Total Grant Expenses	250,000.00

The working budget is based upon federal funding of \$144,325, local match of \$105,675 to be provided by Calhoun County Board of County Commissioners and Liberty County Board of County Commissioners. The total budget for this period is \$250,000.

The following line item budget will serve to further clarify the funding requirements.

**A. Personnel**

The personnel include salaries for a full time Pediatric ARNP, .5 Women's Health ARNP, .2 Physicians specializing in OB/GYN and Pediatric Care and .5 Translator.

**B. Fringe Benefits**

This is the cost of FICA, Unemployment, Worker's Compensation, Retirement and Health Insurance

**C. Supplies**

This is for daily supplies needed to provide services for the clinic.

**D. Equipment**

This is for the purchase of additional equipment necessary to support the expansion of care. This will include: Colposcope Colp-Master III, DopplerLife Dop Handheld 2MHz, Monitor Fetal Corometrics Twin Fetus 172 w/170 Printer, RECON GE Logiq A5 Ultrasound System

**E. Contractual**

This expense includes the cost of a Colposcopy training and the contracted service of a part time ultrasound technician.

## **11. Proposed Project Summary:**

Liberty County Health Department, in collaboration with the Calhoun County Health Department and Liberty Community Health Care, seek to obtain a grant in the amount of \$250,000 to enhance the pediatric and women's health/obstetrical services. With the funding provided, the capability of providing quality women's health services at a local level will be dramatically improved. Currently clients travel 35-50 miles to Tallahassee, Panama City or Marianna receive many services that currently are not provided in-house. This funding would allow many of the services to be provided or improved within the current clinic setting; resulting in decreased barriers to care such as cost, inconsistency of care, inconvenience and the need for transportation to travel outside of the area for care.

The proposed project will employ specialty staff and provide equipment and training needed to support the delivery of improved pediatric services by a pediatrician, enhance women's health with the offering colposcopy services and ameliorate the obstetrics program by adding the services of an obstetrician/gynecologist along with providing ultrasounds and fetal monitoring. Additional funds will be utilized to improve services for our Hispanic and migrant populations by employing a translator to assist in clinic. The goal of the project is to improve the health indicators of pediatric, obstetrical and gynecological clients by providing additional services.

## **12. Plan for Identification of Participants:**

A marketing campaign with brochures, letters and posters will be devised to educate clients, community members, community partners, schools, daycares and other health care providers on the expanded and new services being offered. All clients will be educated on availability of services offered.

A referral process will be established to ensure possible clients are scheduled timely appointments and case managed as indicated. Careful coordination with WIC and Healthy Start for identification of participants will provide an inclusive approach to case management. Clients seen in the clinic with positive pregnancy tests, parents bringing children in for immunizations or pregnant clients in the obstetrical program preparing for delivery will be encouraged to utilize service through education regarding available services provided by the clinic and offering of an appointment.



### **13. Enhancement of Primary Care:**

Specialty services such as pediatrics, obstetrics and many women's health services are limited within the current clinic setting. This funding will allow for expansion of primary care services and decrease barriers to care. Due to the growing number of Spanish speaking patients, a part time translator will be employed to assist with reliable, face-to-face translation and improve the communication with this diverse population.

This project will allow for enhanced women's health services by providing necessary training and equipment for a family planning ARNP to perform colposcopies. Due to the inability to provide the service, clients with abnormal Pap smears are currently referred out to other providers for further evaluation. Often times this prevents clients from following through with important screenings and could result in the missed diagnosis of a serious health issue such as cervical cancer. The women's health ARNP will be trained and equipped to perform colposcopies for clinic clients, as well as, collaborate and contract with other entities to provide the services for their clients. This will increase screening rates in an effort to identify cervical cancer at an early stage. Many clients will be more compliant with screening if the test does not require them to take a full day off from work to drive 30-50 miles to another physician. Another barrier to screening and care is cost. Many clients do not have insurance and cannot afford procedures elsewhere due to the absence of sliding scale fees. Being able to offer services within the clinic alleviates this barrier. A part-time OB/GYN provider will also be available to consult with patients needing further treatment or services that are not currently available by the ARNP. By providing more services, clients will have the convenience of local services and affordable care, thereby they will be more likely to complete necessary screenings and follow up care.

Currently, obstetrical care is provided on a limited basis. Additional funding will allow the obstetrical program to expand exponentially. The present arrangements allows for pregnant clients to be cared for up to 32-36 weeks gestation, at which time the client is transferred to an obstetrician in Tallahassee and seen by a nurse midwife or resident. The barriers to care include travel, inconsistent care providers and affordability. Enhancement funds will allow for the purchase of obstetrical equipment, such as fetal monitor, fetal doppler and ultrasound machine. A part time obstetrician, along with the full time women's health ARNP will provide consistent quality care throughout the pregnancy until delivery in an effort to improve pregnancy outcomes. Being able to offer clients the convenience of ultrasounds and monitoring at the time of visit versus referring them out will be a great incentive and advantage for the clients. The additional services will allow for a consistent, comprehensive and cohesive approach to obstetrical care.



Pediatric services are a great need within this area. With this funding, pediatric services will be enhanced by employing additional pediatric staff to care for not only those infants transferring from the OB program but also new and established children of all ages. A full time pediatric ARNP and part time pediatrician will be available to serve those clients birth through 18 years old with quality primary care services and provide a medical home within the area. Clients will not have to rely on providers out of the area for specialty care. Being able to offer full pediatric services will increase continuity of care and establish a medical home with more holistic care, including case management, to those children with medical conditions and increased ability to ensure up to date immunization status on children.

The goal of this project is to provide enhanced services to clients in the women's health, obstetrical and pediatric programs. This project seeks to provide clients with consistent quality of care throughout their life span. Clients seen in the family planning clinic can feel comfortable with their level of care and feel secure utilizing the obstetrical services by knowing the staff and convenience of offered services. Once the client delivers their baby, it will be a natural transition for the infant to become a client of the pediatric program and the mother to return to the family planning clinic; thereby establishing the family's medical home. Availability of services, consistency, affordability and convenience will decrease barriers to care.

#### **14. Hours of Operation:**

To best serve the needs of the clients, the clinic hours of operation are Monday-Friday from 7:30 am-6:00 pm. The extended day allows clients to be seen before or after work. The clinic is also open during the lunch hour.

#### **15. Minority & Culturally Diverse Populations:**

The population of the catchment area consists of white, black and Hispanic clients. The 2010 population for Calhoun County consists of 80.8 % of the population is white, 13.8% is black, 6.4% identify as Hispanic or Other (US Census). In Liberty, the 2010 census reports 77.3 % of the population is white, 17.9% is black, and 6.2% are persons of Hispanic or Latino origin. However, service records from the Federally Qualified Health Care Facility and the County Health Department reflect a larger number of Hispanics than those documented by the Census. The clinics currently have two bi-lingual staff employed who assist with interpretation when available; however, this funding will allow an additional part time translator to be hired to assist in translation with a result of decreased communication barriers and improved quality of care, as well as, client satisfaction.



## 16. Health Care Diversity Issues:

Health care diversity and cultural competency are essential to providing quality healthcare services. Measures will be taken to ensure the clinic and providers appreciate and respect the cultural values and beliefs of clients. The funding of this grant will enable the clinic to hire a part-time translator to assist in identifying and addressing some of the diversity issues. Learning aides and educational information will be provided in a language and on a reading level that is conducive to the client's understanding. Providers will ensure successful teaching plans are congruent with client and family cultural values and beliefs. Periodic review of all clinic and educational brochures will occur by the clinic QA/QI team, in accordance with the clinic QA/QI Plan, to ensure appropriate information is being provided. Customer satisfaction surveys will be administered at a minimum of every six months to allow for client feedback. Comment/suggestion boxes will be established in each clinic for individual client remarks. Marketing campaigns will include culturally diverse media such as the Hispanic newsletter and other available methods.

## 17. Evaluation of Effectiveness:

The project will use existing reports, data and program measures to evaluate program efficacy. These include:

- Healthy People 2020 Goals
  - Cervical cancer age-adjusted death rate
  - Women 18 years of age and older who received a Pap test in the past year
  - Early prenatal care (began 1<sup>st</sup> trimester)
  - Infant death rate
- Community Health Assessment Indicators
  - Births to teens 15-19
  - Repeat births to mothers 15-19
  - Births to mothers who smoked during pregnancy
  - Two-year olds fully immunized
  - Kindergarten children fully immunized
  - Asthma hospitalizations ages 1-5
- Healthy Start Outcome Measures
  - Prenatal screening
  - Consent to prenatal screening

**18. Data Collection and Reporting Capabilities:**

All clinics currently use the Florida Department of Health, Health Management System. This system allows staff the capability to build templates and reports that facilitate improved patient care by providing a tickler system to prompt us when services are indicated. For the pediatric clients, the system will identify those needing immunizations, developmental screens and/or well-child checks. The same system will be used to provide care coordination with women's health and obstetrical clients regarding screenings, laboratory testing, or referrals.

With experienced onsite technology support, resources are readily available for reports and/or templates. A sample report template is attached as an example of the possible reports to be generated.

**19. Letters of Commitment:**

Letters attached from:

- Liberty County Board of County Commissioners
- County Board of County Commissioners
- Liberty Community Health Care Board Chairman



# HMS Report Portal

Dash Board

Local Reports

County/State Reports

HMS Adhoc Report Viewer  
Performance

## HealthyStart

<input type="radio"/> Care Coordination Summary	<input type="radio"/> HSClients Who Drink Alcohol	<input type="radio"/> Prenatal Screens by Age
<input type="radio"/> Case Client Directory with Emergency Contact	<input type="radio"/> HSClients Who Drink Alcohol by Outcome	<input type="radio"/> Prenatal Screens by Question11(Depression)
<input type="radio"/> Client Visits Services by Service Provider and by Site	<input type="radio"/> HSClients Who Smoke	<input type="radio"/> Prenatal Screens by Question12 (Mental Health Counseling)
<input type="radio"/> Clients with active Careplan not received service in last 30 days	<input type="radio"/> HSClients Who Smoke by Outcome	<input type="radio"/> Prenatal Screens by Trimester
<input type="radio"/> ClientVisitsServicesbyServiceProvider	<input type="radio"/> HSInitialContact	<input type="radio"/> PrenatalScreensbyQuestion14
<input type="radio"/> HealthyStartMarkedGoalsandServices	<input type="radio"/> Infants Screened	<input type="radio"/> Services by Provider
<input type="radio"/> HealthyStartMarkedNeedsandServices	<input type="radio"/> Maternity List	<input type="radio"/> Substance Exposed Clients
<input type="radio"/> HS Case by Select Census Tract by CaseMgr	<input type="radio"/> Prenatal Outcome	

Enter Search Text:

The output window for this search could be minimized

[HMS Adhoc User Help Document](#)

[HMS Report Portal Help Document](#)

## Florida Department of Health HMS

## Prenatal Screens by Trimester

Screen Dates: Jul 01, 2012 - Jul 31, 2012

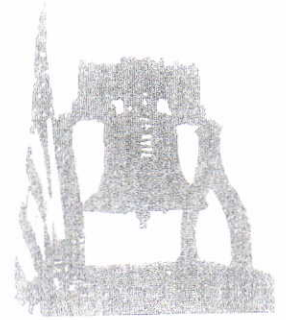
<u>Name</u>	<u>DOB</u>	<u>ScreenDate</u>	<u>Age</u>	<u>ScoreCompute</u>	<u>ScreeningStatus</u>	<u>Trimester</u>	<u>ProviderName</u>
[REDACTED]	3/20/1995	7/9/2012	17	5	REFERRED	1	MUNIZ, ORLANDO MD
[REDACTED]	2/21/1981	7/2/2012	31	0	NOT REFERRED	1	JACKSON, BRYCE MD
[REDACTED]	1/8/1991	7/2/2012	21	3	REFERRED	1	All About Women OBGYN
<b>Total by Trimester 1</b>				<b>3</b>			
[REDACTED]	3/14/1989	7/11/2012	23	3	REFERRED	2	EMERALD COAST OBGYN
[REDACTED]	5/22/1987	7/9/2012	25	10	REFERRED	2	LIBERTY COUNTY HEALTH DEP
[REDACTED]	11/12/198	7/12/2012	24	8	REFERRED	2	MUNIZ, ORLANDO MD
<b>Total by Trimester 2</b>				<b>3</b>			





# **Liberty County Board of County Commissioners**

Post Office Box 399  
Bristol, Florida 32321  
Phone: (850) 643-5404



July 27, 2012

Mrs. Rachel Manspeaker  
Liberty County Health Department  
12832 NW Central Avenue  
Bristol, FL 32321

RE: 2012-2013 Low Income Pool (LIP) Enhanced Primary Care project grants

Dear Mrs. Manspeaker,

This letter is written in support of the application being submitted by the Liberty County Health Department for additional Low Income Pool (LIP) funds to enhance primary care programs.

Currently, the Health Department is the only provider serving this community and the health care needs of our population are critical. Having the Health Department involved will ensure success of this proposed project as we move forward to meet our community's healthcare needs.

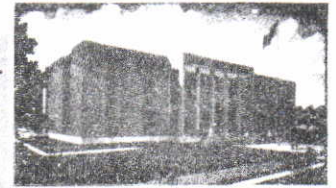
The vital services for so many needy individuals will ensure a healthier future for Liberty County residents and the surrounding area. We fully support and applaud your mission and appreciate the opportunity to work collaborately with the center in the support of the provision of services and increasing access for our rural and underserved populations.

Sincerely,

A handwritten signature in cursive script that reads "Dexter Barber".

Dexter Barber  
Chairman  
Liberty County Board of County Commissioners.

**BOARD of COUNTY COMMISSIONERS**  
CALHOUN COUNTY, FLORIDA



**MEMBERS:**

DANNY RAY WISE, DIST. NO. 1  
DARRELL McDOUGALD, DIST. NO. 2  
DON MILLER, DIST. NO. 3  
WILLIE TRUMAN GRANT, DIST. NO. 4  
HAROLD PICKRON, DIST. NO. 5  
RUTH W. ATTAWAY, CLERK

July 27, 2012

Mrs. Rachel Manspeaker  
Liberty County Health Department  
12832 NW Central Avenue  
Bristol, FL 32321

RE: 2012-2013 Low Income Pool (LIP) Enhanced Primary Care project grants

Dear Mrs. Manspeaker,

This letter is written in support of the application being submitted by the Liberty County Health Department for additional Low Income Pool (LIP) funds to enhance primary care programs.

Currently, the Health Department is the only provider serving this community and the health care needs of our population are critical. Having the Health Department involved will ensure success of this proposed project as we move forward, to meet our community's healthcare needs.

The vital services for so many needy individuals will ensure a healthier future for Calhoun County residents and the surrounding area. We fully support and applaud your mission and appreciate the opportunity to work with the center in the support of the provision of services and increasing access for our rural and underserved populations.

Sincerely,

Harold Pickron  
Chairman  
Calhoun County Board of County Commissioners





**Liberty Community Health Care**

10971 NW Spring Street  
Bristol, Florida 32321  
(850)643-2292  
Fax: (850)643-2306

July 27, 2012

Mrs. Rachel Manspeaker  
Liberty County Health Department  
12832 NW Central Avenue  
Bristol, FL 32321

RE: 2012-2013 Low Income Pool (LIP) Enhanced Primary Care project grants

Dear Mrs. Manspeaker,

This letter is written in support of the application being submitted by the Liberty County Health Department for additional Low Income Pool (LIP) funds to enhance primary care programs.

Currently, the Health Department is the only provider serving this community and the health care needs of our population are critical. Having the Health Department involved will ensure success of this proposed project as we move forward to meet our community's healthcare needs.

The vital services for so many needy individuals will ensure a healthier future for Liberty County residents and the surrounding area. We fully support and applaud your mission and appreciate the opportunity to work collaborately with the center in the support of the provision of services and increasing access for our rural and underserved populations.

Sincerely,

A handwritten signature in black ink, appearing to read 'Michael Clark', written over a horizontal line.

Michael Clark  
Chairman  
Liberty Community Health Care

**BUDGET DETAIL**  
**July 2012-June 2013**

Statement of Revenues and Expenses	
<b>GRANT REVENUE</b>	
Local Match (42.27%)	105,675.00
State Match	0.00
Federal Match (55.94%)	144,325.00
Total Grant Revenue	250,000.00
<b>GRANT EXPENSES</b>	
Salary & Wages	179,394.00
Benefits	41,080.00
Supplies	679.00
Equipment	27,602.00
Contractual	1,245.00
Construction	0.00
Other	0.00
Total Grant Expenses	250,000.00