

**2012 Low Income Pool (LIP) Enhanced Project Application  
Expansion of Primary Access to Dental in Brevard County  
Brevard County Health Department  
July 2012**

**1) Applicant:**

Brevard County Health Department  
Primary Access to Dental

**2) Medicaid Provider Number:**

0519251

**3) Provider Type:**

Florida County Health Department

**4) Amount Applying For: \$59,143**

**5) Identify as a new or enhanced program: Enhanced Program**

**6) Description of the delivery system and affiliations with other health care service providers:**

In 1994, the Brevard County Health Department established a Volunteer Adult Dental Clinic (VADC), to provide dental services to low-income/underinsured adult residents of Brevard County. The clinic established partnerships with local dental providers to participate in the adult dental clinic and provide care at no cost to the client. VADC has had an overwhelming success and continues to provide access to dental treatment such as exams, x-rays, fillings and extractions for the underinsured/low income residents of Brevard County. In 2011, the VADC treated the dental needs of approximately 600 residents of Brevard County who were underinsured/low income financially qualifying below 100% of the Federal Poverty Guidelines. The VADC extends services to all eligible adult residents of Brevard County. The clinic is staffed by volunteer dentists, specialists and paid staff from the Health Department. This program is supported by the Board of Brevard County Commissioners, the Brevard County Health Department, the Brevard Dental Society and local dental providers.

The VADC has expanded with recent award funding from the Shirley E. Noland Foundation. This grant award has allowed for a new program to be established for victims of domestic violence. This new program, Hand Up Dental clinic is a combined effort partnership with Space Coast Volunteers in Medicine and the Brevard County Health Department. Dental services include examination, x-rays, restorations, extractions and replacement of missing teeth. Clinics are provided one day per week at a centralized location; Rockledge Dental Clinic. The dental coordinator works closely with local police departments, local emergency departments and private physician offices to refer clients in need to this clinic.

The VADC and its affiliate programs provide dental care for acute and chronic dental problems, oral hygiene education, diagnosis, treatment and follow-up care and limited laboratory services for biopsies. Services are provided by Brevard County Health Department staff from the Melbourne, Viera and Titusville sites with support provided by volunteering private providers, local hospitals and the Board of County Commissioners. Additionally, Volunteer Specialists such as oral surgeons, prosthodontists, endodontists and periodontists donate their time both in our clinic facility as well as in their private offices. All services provided are provided at no cost to the underinsured/low income client.

The Brevard County Health Department adult dental programs have proven to be an overwhelming success treating over 3200 clients' dental needs in the last five years. Unfortunately, with the rise in unemployment climbing to 9.5% in Brevard County the number of underinsured/low income adults that cannot afford to receive treatment by a dentist due to cost has also risen considerably. According to the Florida Public Health Institute; 10,767 adults visited emergency departments in Brevard County between 2008 and 2010. The Adult Dental Program has worked closely with local hospitals within Brevard County to provide an alternative to emergency department visits with a limited number of appointments.

As the demand for services has increased, the VADC has partnered with a local hospital to provide emergency department diversion for clients who present at their doors for acute, routine and pain management of dental related problems. This partnership recognizes that many clients deem the emergency department as the portal to health and dental care and the client can not be denied service. After a medical clearance has been established by a health care provider and the client is not categorized as emergent/urgent life threatening, the client can be referred directly to the dental clinic for care. Currently, the clinic provides services to 20 or more clients per week. This clinic is funded solely by the local hospital partner.

The Brevard County Health Department Adult Dental Program Director has taken an active role in the community as liaison between local hospitals, Volunteer Providers and the Brevard Dental Society. In addition, recruiting and retaining Specialty Providers has been instrumental in providing continuum of care to clients both in our clinics and in their private offices.

The Brevard County Health Department is committed to establishing increased access to dental care for the large number of backlogged underinsured/low income adults needing dental care in the county at little or no cost. It has been actively networking with other local agencies to help improve access to dental care. These agencies include the Space Coast Volunteers in Medicine, Health First Hospitals, Project Dentists Care and the Brevard County Dental Society.

## **7) Service Area:**

Brevard County is located on 70 miles of the Atlantic Coastline and centrally located in the state and known as the Space Coast. The expanded Primary Access to Dental Program will provide services to all eligible adult residents of Brevard County who are below 100 percent of the Federal Poverty Level and are considered to be underinsured/low income population. Services will be offered at all three clinic locations within the county. These clinics are strategically placed in the North, Central and South portions of the county.

## **8) Service Area Characteristics: (including demographics or population served and distribution of current population served by funding source, e.g., Medicaid, Medicare, Uninsured, Commercial insurance, etc.):**

The mission of the Brevard County Health Department since its establishment has been to provide quality medical and limited dental care to residents of Brevard County, many of which are below 100 percent of the Federal Poverty Guidelines.

The Primary Access to Dental (PAD) will help serve eligible adult residents of Brevard County who are underinsured/low income, are below 100 percent of the Federal Poverty Level and without dental benefits, including Federal and State Funded Insurance Plans. A recent PEW report indicates that more than 115,000 dental-related ED cases were reported in Florida in 2010. These dental-related ED visits produced more than \$88 million dollars in charges, most of which were uncompensated.

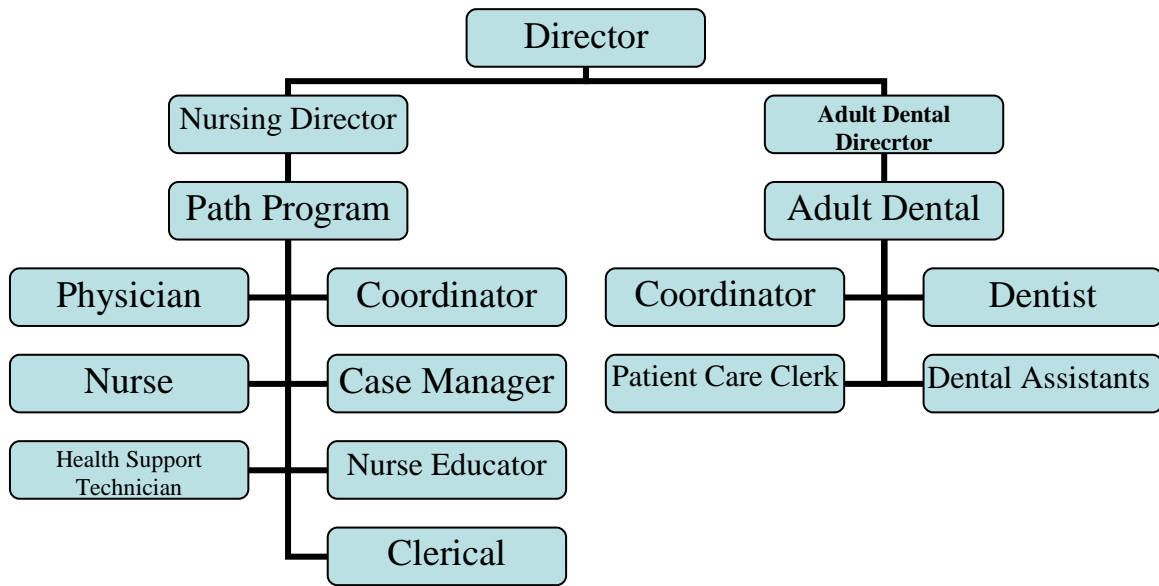
If funded by the Low Income Pool (LIP) Grant this request for \$59,143 would allow the PAD program to provide services to patients who otherwise would not seek dental care for routine, preventive or emergent dental treatment but divert to local emergency departments for care. Statistics in Brevard County indicate that 16.3% of the adult population did not seek dental treatment due to cost and overwhelmingly 38.7% of the Black population does not seek routine dental care. In addition, the unemployment rate has risen to 9.5%, which further diminishes the health care dollar. Resources are not readily available to this diverse group to provide preventive care and education, which contributes to their unmet health and dental care needs.

Improving dental access for eligible clients is a balancing act between the supply and demand for services, which means there is no delay when the demand for service is warranted and service is delivered. The Primary Access to Dental (PAD) will be an extension of the Primary Access to Health Program (PATH) which provides a medical home for the underinsured/low income population of the county at no charge to the client. Clients enrolled in the LIP PATH Program will be referred to the PAD Program and provided with a dental home. The incorporation of Primary and Dental Care will allow our medical providers to

make expeditious referrals for acute dental problems. The referral system will be used as the gateway for continued care.

Access to affordable dental care in Brevard County has been a primary concern. Statistics indicate that 22.4% of the adults age 18 – 44 have not sought dental care due to the high cost and limited access. Grant funds will be used to provide access to dental care that a large majority of the underinsured/low-income population have neglected. By providing free dental care for eligible clients, we will help to establish a healthier community; therefore, help reduce risk factors associated with dental disease. The expansion of dental services will include evaluation, intervention and treatment of acute episodic dental diagnosis.

**9) Organization Chart and Point of Contact:**



Heidar Heshmati, M.D., M.P.H., Ph.D.  
 Director Brevard County Health Department  
 2575 North Courtenay Parkway  
 Merritt Island, FL 32953  
 321-454-7111

Or

Gail Morrison, RN  
 PATH Sr. Nursing Supervisor/Coordinator  
 2555 Judge Fran Jamieson Way  
 Viera, FL 32940  
 321-639-5804  
 Gail\_morrison@doh.state.fl.us

Or

D. Christine Tullos CDA  
 Adult Dental Supervisor/Coordinator  
 611 Singleton Ave.  
 Titusville, FL 32796  
 321-269-6316  
 Diana\_tullos@doh.state.fl.us

**10) Proposed Budget for funding detailing the request:**

\$54,288		<u>TOTAL SALARIES AND BENEFITS</u>
	44,928	Dentist 3 one-half days/week (12 hrs/week)
	9,360	Dental Assistant 3 one-half days/week (12 hrs/week)
\$3,900		<u>TOTAL SUPPLIES</u>
	2,340	Dental supplies @ \$ 15 / 1/2 day
	1,560	Medical records and Office Supplies @ \$10 / 1/2 day
\$955		<u>TOTAL EQUIPMENT</u>
	955	Medical instruments

**\$59,143                      Total First Year Operating Budget**

(Excel Worksheet is attached to application)

**11) Provide a brief summary of your proposed project:**

The Center for Disease Control (CDC) reports that emergency department (ED) visits have been increasing in numbers since 1996 and poor and underinsured people are more likely to seek ED treatment. It also reports that one in five people in the United States visited the ED over a twelve-month period in 2008. At the same time, the number of emergency departments has decreased, causing long waits and overcrowding. A recent PEW report indicates that more than 115,000 dental-related ED cases were reported in Florida in 2010. These dental-related ED visits produced more than \$88 million dollars in charges, most of which were uncompensated. Underinsured patients tend to utilize the ED for primary care, which includes when they are in dental pain.

Improving dental access for eligible clients is a balancing act between the supply and demand for services, which means there is no delay when the demand for service is warranted and service is delivered. If funded by the Low Income Pool Grant this request for \$59,143 will allow the Brevard County Health Department Primary Access to Dental (PAD) clinic to extend services to include acute dental care services three one-half days per week or 12 hours per week. This grant will target the underinsured/low-income adult population of Brevard County who are below 100% of the Federal Poverty Level and who are without health benefits, including Federal and State Funded Insurance Plans.

Our primary goal is to create a dental referral and treatment for emergency department diversion for local hospitals and primary care related to acute dental care for the underinsured/low-income population. Services will include

evaluation, intervention and treatment of acute episodic dental diagnosis. Established and new primary care clients will have access to the dental clinic. By incorporating primary and dental care together, our medical providers will be able to make an expeditious referral for acute dental problems to this grant funded uninsured program. This allows the PATH Program to care for the entire need of the client, both medical and dental. In addition, we will reduce the need for the underinsured dental patient to seek relief from self-medication, which may lead to long term drug dependency and continued emergency department visits.

The PAD Program will be staffed with a dental provider and dental assistant. The current dental coordinator will continue to oversee the adult dental program. Grant funds will not be used to purchase any infrastructure or equipment as functionally operating dental clinics are already in place by the BCHD. Funds will be allocated for direct implementation of services directly related to the dental care of clients served and for salaries and benefits for a part-time dentist and dental assistant.

Expanding the current medical Primary Access to Health Clinic supported by the current Low Income Pool (LIP) grants to include dental services provided by a LIP grant funded expanded adult dental program will help provide needed dental services to low-income residents of Brevard County, as well as reduce the number of dental-related visits to area hospital emergency departments.

The Brevard County Health Department proposes to increase access by 100 percent for new and enrolled clients in the Primary Care Program expanding services into the dental field. This program will provide dental services 12 hours per week.

The general goals of the program will be to target underinsured/low income adult residents and provide the following:

- provide access for underinsured/low income residents to receive quality dental care at no charge
- reduce the number of unnecessary emergency room visits and preventable hospitalizations related to dental issues and co-morbidity.
- to improve patient compliance through education

Services will be provided by the Brevard County Health Department clinic sites in North, Central and South Brevard regions. The clinic will provide services Tuesday through Thursday and will provide services in four hour blocks; 8 am to 12 pm or 1 pm to 5 pm.

The Center for Disease Control (CDC) reports that emergency department (ED) visits have been increasing in numbers since 1996 and poor and underinsured people are more likely to seek ED treatment. It also reports that one in five people in the United States visited the ED over a twelve-month period in 2008. At the same time, the number of emergency departments has decreased, causing long waits

and overcrowding. A recent PEW report indicates that more than 115,000 dental-related ED cases were reported in Florida in 2010. These dental-related ED visits produced more than \$88 million dollars in charges, most of which were uncompensated. Underinsured patients tend to utilize the ED for primary care, which includes when they are in dental pain.

Specific goals for the Primary Access to Dental Program will be:

- Decrease local emergency department visits/hospital admissions by giving eligible clients a “medical/dental home” for Primary Care.
  - Currently 26% of Brevard County Residents are deemed self pay in one local hospital emergency department. This statistic only indicates that the client has no form of health care insurance and the patient is responsible for charges incurred.
- Create the support system needed for Emergency Department diversion; i.e. appointment and walk-in capability for clients who were triaged and not found to have a life-threatening emergency.

The funds in the amount of \$59,143 if awarded from the Low Income Pool (LIP) Project will be allocated for expansion of the Primary Access to Health Program to include dental services. This expansion will serve all eligible clients, new or established in PATH Program. All funds will be disbursed during the first year operating budget. The current director of the dental program will oversee operations for the expanded dental clinic. Funds received from this application will be used for professional and non-professional staff, and supplies needed to successfully maintain the program.

## **12) Describe plan for identification of participants for inclusion in the population to be served in the project:**

The Primary Access to Health Program (PATH) offers medical services to adult residents of Brevard County who have incomes less than 100% of the Federal Poverty Level, are not insured through Federal, State or private health plans and are considered as underinsured/low income. By incorporating primary and dental care together, our medical providers will be able to make an expeditious referral for acute dental problems to this grant funded uninsured program. This allows the PATH Program to care for the entire need of the client, both medical and dental.

The population to be served through the Primary Access to Dental Program (PAD) will be identified through their medical home, PATH Program. After evaluation by a medical provider in the clinic setting, clients will be referred to the Case Manager for referral to the PAD Program for dental care. Referrals from the PATH Program will have qualified for services through a streamlined eligibility program; same day self declaration.

The PAD Program Director and PATH Program Director will continue to network with local agencies to identify eligible clients for referral to Primary Care.



The local agencies will include:

- Board of Brevard County Commissioners
- Housing and Human Services
- Brevard County Fire Rescue
- Brevard County Healthcare Forum
- Local colleges
- Faith based organizations
- Community Action Team
- Local food pantries
- Sharing Centers
- Local hospital emergency department
- Local hospital case management and discharge planner departments
- Local physician offices
- Local nurse call help lines

In addition to presentations, printed literature in the form of brochures will be distributed to above agencies and organizations to ensure that all underinsured/low income residents of Brevard County are aware of services provided by the PATH Program.

### **13) How will access to primary care access system services be enhanced by this project?**

Improving dental access for eligible clients is a balancing act between the supply and demand for services, which means there is no delay when the demand for service is warranted and service is delivered. If funded by the Low Income Pool (LIP) this request for \$59,143 would allow the Brevard County Health Department Primary Access to Healthcare (PATH) Program to extend services to include acute and preventive dental care for three one-half days per week or 12 hours per week.

This will enable the PATH/PAD Programs to care for the entire need of the client, both medical and dental, as this is an extension of Primary Care. In addition, we will reduce the need for the underinsured dental patient to seek relief from self-medication, which may lead to long term drug dependency and continued emergency department visits. In addition to direct acute dental services, a Primary Care Nurse Navigator will be on site for other referrals including medication assistance, education and counseling and other related issues related to Primary or Dental Care. This grant will target the underinsured/low-income adult population of Brevard County who are below 100% of the Federal Poverty Level and who are without health benefits, including Federal and State Funded Insurance Plans.

Our primary goal is to create a dental referral and treatment for emergency department diversion for local hospitals and primary care related to acute dental

care for the underinsured/low-income population. Services will include evaluation, intervention and treatment of acute episodic dental diagnosis. Established and new primary care clients will have access to this expanded dental program. By incorporating primary and dental care together, our medical providers will be able to make an expeditious referral for acute dental problems to this grant funded uninsured program. This allows the PATH Program to care for the entire need of the client, both medical and dental.

**14) Does the enhancement include hours of operation after 5:00 pm and/or on weekends at existing sites, or the establishment of a new clinic site?**

With the expansion of the dental program through the Primary Access to Health Program, there will be an increase of 100% hours of operation for clients referred directly to the PAD Program.

The Primary Access to Healthcare currently has Urgent Care Clinics to provide emergent care for PATH Clients after hours and on weekends at no charge to the client to provide medical care. This provides an alternative to Emergency Department visits and enables the client to receive necessary medications until they can be seen in the PAD clinic during regular hours of operation. This innovative concept of utilizing Urgent Care Clinics is considered an extension of the Primary Care Clinic. In addition, local urgent dental care clinics have opened in the county and provide after hour services. The dental coordinator will establish working relationships modeled after the PATH Program extended hours by recruiting dental clinics to provide necessary care for emergent dental care.

**15) Describe your capability to serve minority and culturally diverse populations:**

These services are already being implemented by the Brevard County Health Department Volunteer Adult Dental Clinic (VADC) clinic. A language line with over 100 available languages is available for non-English languages. A designated TTY is available for the hearing-impaired client; the staff has experience with this program and is proved an effective way of communication.

The Brevard County Health Department VADC currently serves all eligible underinsured/low income residents for Brevard County and does not discriminate based on race, color, religion or sex. As a state agency we have a particular focus on providing services for all diverse and minority populations.

**16) Describe how you will identify and address health care diversity issues as well as health care literacy barriers:**

Brevard County has a mixture of cultures, ethnic backgrounds, a broad age span and a diverse education level. We are a leader in employing staff who are culturally diverse and are instrumental in helping to identify clients with specific needs and cultural beliefs. A language line with over 100 available languages is available for non-English languages and a designated TTY is available for the hearing-impaired client. Effective communication with clients will be essential to provide quality medical care upon different ethnic populations served within the clinic without impeding their medical care. The Brevard County Health Department VADC is already implementing these services.

Literacy barriers will be diminished by printing all informative material, including brochures and educational materials, at a sixth grade reading level. This will ensure all clients, regardless of educational background, will have the ability to understand and benefit from reading material essential to their care.

The Brevard County Health Department VADC currently serves eligible underinsured/low income residents for Brevard County and does not discriminate based on race, color, religion or sex. As a state agency we have a particular focus on providing services for all diverse and minority populations.

**17) Describe measures and data sources that you will use to evaluate the effectiveness of each initiative comprising your project:**

The Primary Access to Dental program (PAD) will track and monitor program usage through the Health Management System already in place. Statistics provided quarterly by the Primary Access to Healthcare (PATH) clinic will be compared to determine the program effects and how improvement can be accomplished for decreasing avoidable emergency department and in-patient admissions.

PAD will conduct ongoing assessment of coordinating services through quarterly satisfaction surveys of all stakeholders. We will improve patient adherence with self-care measures, including educational needs and individualized treatment plans. PAD will also improve adherence by utilizing clinical practice guidelines illustrated by evidence-based research.

Member experience and satisfaction will be evaluated by survey which asks PAD clients how satisfied they were with their care, plan and staff. These surveys will be offered at completion of service and include their experience and satisfaction with care, treatment plan(s) and staff. Questions about the ease of seeing a dentist and the wait time will be included and the effectiveness of the referral system from the PATH Program.

Questions about the ease of seeing a dentist and the wait time will be included. Staff courtesy will also be evaluated. Individual client surveys offered at completion of service will indicate their experience and satisfaction with care, treatment plan(s) and staff.

The data gathered will be used to evaluate effectiveness of PAD. Based on information collected, we will refine our strategies, identify strengths and weaknesses and make improvements to the referral system from Primary Care and other processes established.

**18) Describe data collection and reporting capabilities including systems and staffing resources, provide a reporting template:**

The Health Management System, Ad-hoc Portal Report System and Referral Tracking component will be used for data collection to track, document and monitor the following activities for underinsured/low income clients who access the Primary Access to Dental (PAD) clinic.

The following data will be collected using a Microsoft Excel Worksheet:

- Increased access to PAD will be measured in numbers of clients served.
- Adherence to treatment plans will be assessed.
- Reduction of emergency department admissions and hospitalizations will be compiled with hospital input.
- Year end statistics will be compiled and reported, along with suggestions for improvement.
- Client survey at the completion of each clinical visit to collect data as to what the client would have done had the PAD program not been available:
  - I would have gone to the emergency department
  - I would have gone to a dental office
  - I would have gone to a walk-in clinic
  - I would have called 911
  - I would have stayed home
  - I don't know what I would have done

Additional data collection and reporting will be done through the following components:

- Health Management System Ad-hoc Portal Report
  - Number of scheduled appointments
  - Number of kept appointments
  - Number of failed appointments
  - Diagnosis Codes
- Information Technology Department
  - Creation of Microsoft Excel Spreadsheets to follow trends and outcomes

Staffing resources will include:

- Weekly staffing matrix
- Cross training of employees

Reporting templates are provided as attachment to LIP Grant Application email.

**19) Provide a letter of commitment from the local match fund source on the entity's letterhead.**

Letter attached on page 14



HOUSING & HUMAN SERVICES DEPARTMENT  
2725 Judge Fran Jamieson Way, Bldg. B., Rm. 106  
Viera, Florida 32940

Telephone: (321) 633-2007  
FAX: (321) 633-2026

July 17, 2012

Heidar G. Heshmati, MD, MPH, PhD  
Director, Brevard County Health Department  
2575 N Courtenay Parkway  
Merritt Island, FL 32953

RE: LETTER OF SUPPORT FOR LOCAL MATCH  
LOW INCOME POOL APPLICATION  
PRIMARY ACCESS TO HEALTH CLINIC EXPANSION – DENTAL SERVICES

Dear Dr. Heshmati:

Please accept this letter as the Brevard County Government's strong endorsement for expanding the scope of the Brevard County Health Department's Primary Access To Health (PATH) by adding a new Dental Low Income Pool (L.I.P.) clinic to serve Brevard County. We currently have medical L.I.P. clinics in the Central and Southern parts of our 82-mile long County, but none providing dental services to eligible L.I.P. clients. This Dental L.I.P. clinic will help connect the uninsured and dental underserved with needed dental care services throughout the County. This will also lead to lowering the rate of unnecessary hospital emergency room visits in that community for acute dental conditions that could be managed in a primary care dental setting.

Brevard County's medically underserved exhibit many disparities, including health status, poverty, lack of insurance, and affordable access to preventive and primary care services. 26.62% of Brevard County residents live below 200% of the poverty level. This represents 148,257 of our 556,938 population.

The Brevard County Government will provide the 42.27% match required by the Florida Low Income Pool (LIP) program, which matches community investment for the health care needs of its low-income residents. The first year match will be \$25,000 of the first year program budget of \$59,143. These funds will only be used to provide dental services for the Medicaid uninsured and underinsured people of Brevard County and the State of Florida at large.

Please let us know if there is anything we can do to strengthen the Brevard County Health Department's capabilities to provide access for primary care to those in need in Brevard County.

Sincerely,

Ian Golden, Director  
Housing and Human Services Department

**LIP PAD Dental Staffing Matrix Template**

<b>Viera</b>	Monday 1/2/2012		Tuesday 1/3/2012		Wednesday 1/4/2012		Thursday 1/5/2012		Friday 1/6/2012	
	AM	PM	AM	PM	AM	PM	AM	PM	AM	PM
<b>Dentist</b>		√				√		√		
<b>Dental Assistant</b>		√				√		√		
<b>Melbourne</b>	Monday 1/2/2012		Tuesday 1/3/2012		Wednesday 1/4/2012		Thursday 1/5/2012		Friday 1/6/2012	
	AM	PM	AM	PM	AM	PM	AM	PM	AM	PM
<b>Dentist</b>			√			√			√	
<b>Dental Assistant</b>			√			√			√	
<b>Titusville</b>	Monday 1/2/2012		Tuesday 1/3/2012		Wednesday 1/4/2012		Thursday 1/5/2012		Friday 1/6/2012	
	AM	PM	AM	PM	AM	PM	AM	PM	AM	PM
<b>Dentist</b>	√			√				√		
<b>Dental Assistant</b>	√			√				√		

LIP PAD Dental Services Template

7/25/2012

BREVARD CHD

For 1/1/2012 To 6/30/2012

Appointments Made	Kept	Not Kept
----------------------	------	----------

Count	Count	%	Count	%
-------	-------	---	-------	---

**MELBOURNE CHD**

**DENTAL**

DEN ACUTE PAIN PKG	3	2	67%	1	33%
DEN PROPHY PKG	30	19	63%	11	37%
DENTAL CHECKUP / EXAM	361	259	72%	102	28%
DENTAL EMERGENCY	5	3	60%	2	40%
DENTAL EXTRACTION	36	26	72%	10	28%
DENTAL PROPHYLAXIS	135	102	76%	33	24%
DENTAL FILLINGS/RESTORATION	200	180	90%	20	10%
DENTAL X-RAYS	345	345	100%	0	0%
<b>CLINIC TOTAL</b>	1115	936	84%	179	16%

**TITUSVILLE CHD**

**DENTAL**

DEN ACUTE PAIN PKG	1	1	100%	0	0%
DEN PALLATIVE TREATMENT PKG	2	1	50%	1	50%
DEN PROPHY PKG	4	2	50%	2	50%
DEN RESTORATION PKG W/PULP OR EX	3	2	67%	1	33%
DENTAL CHECKUP / EXAM	407	284	70%	123	30%
DENTAL EMERGENCY	20	16	80%	4	20%
DENTAL FILLINGS/RESTORATION	20	16	80%	4	20%
DENTAL PROPHYLAXIS	100	74	74%	26	26%
DENTAL X-RAYS	250	250	100%	0	0%
<b>CLINIC TOTAL</b>	807	646	80%	161	20%

**VIERA CHD**

**DENTAL**

DEN ACUTE PAIN PKG	3	2	67%	1	33%
DEN PROPHY PKG	43	24	56%	19	44%
DEN RESTORATION PKG W/PULP OR EX	3	2	67%	1	33%
DEN RESTORATION PKG WO/PLP OR EX	1	1	100%	0	0%
DENTAL CHECKUP / EXAM	729	456	63%	273	37%
DENTAL EMERGENCY	11	9	82%	2	18%
DENTAL FILLINGS/RESTORATION	11	9	82%	2	18%
DENTAL PROPHYLAXIS	99	66	67%	33	33%
DENTAL X-RAYS	236	158	67%	78	33%
<b>CLINIC TOTAL</b>	1136	727	64%	409	36%



LIP PAD Dental Client Survey Template
---------------------------------------

What would you have done if the enhanced PAD Dental Program had not been available:

Date	Client Response
9/4/2012	Emergency Department
9/5/2012	Dental Office
9/8/2012	Walk-In Clinic, Community Clinic
10/12/2012	Call 911
10/31/2012	Stayed Home
11/15/2012	Don't Know

L.I.P. Funding Proposal Budget  
Expansion For New Dental L.I.P. Clinics  
Brevard County Health Department  
FY 2012-2013

\$54,288		<u>TOTAL SALARIES AND BENEFITS</u>
	44,928	Dentist 3 one-half days/week (12 hrs/week)
	9,360	Dental Assistant 3 one-half days/week (12 hrs/week)
\$3,900		<u>TOTAL SUPPLIES</u>
	2,340	Dental supplies @ \$ 15 / 1/2 day
	1,560	Medical records and Office Supplies @ \$10 / 1/2 day
\$955		<u>TOTAL EQUIPMENT</u>
	955	Medical instruments
<b>\$59,143</b>		<b>Total First Year Operating Budget</b>